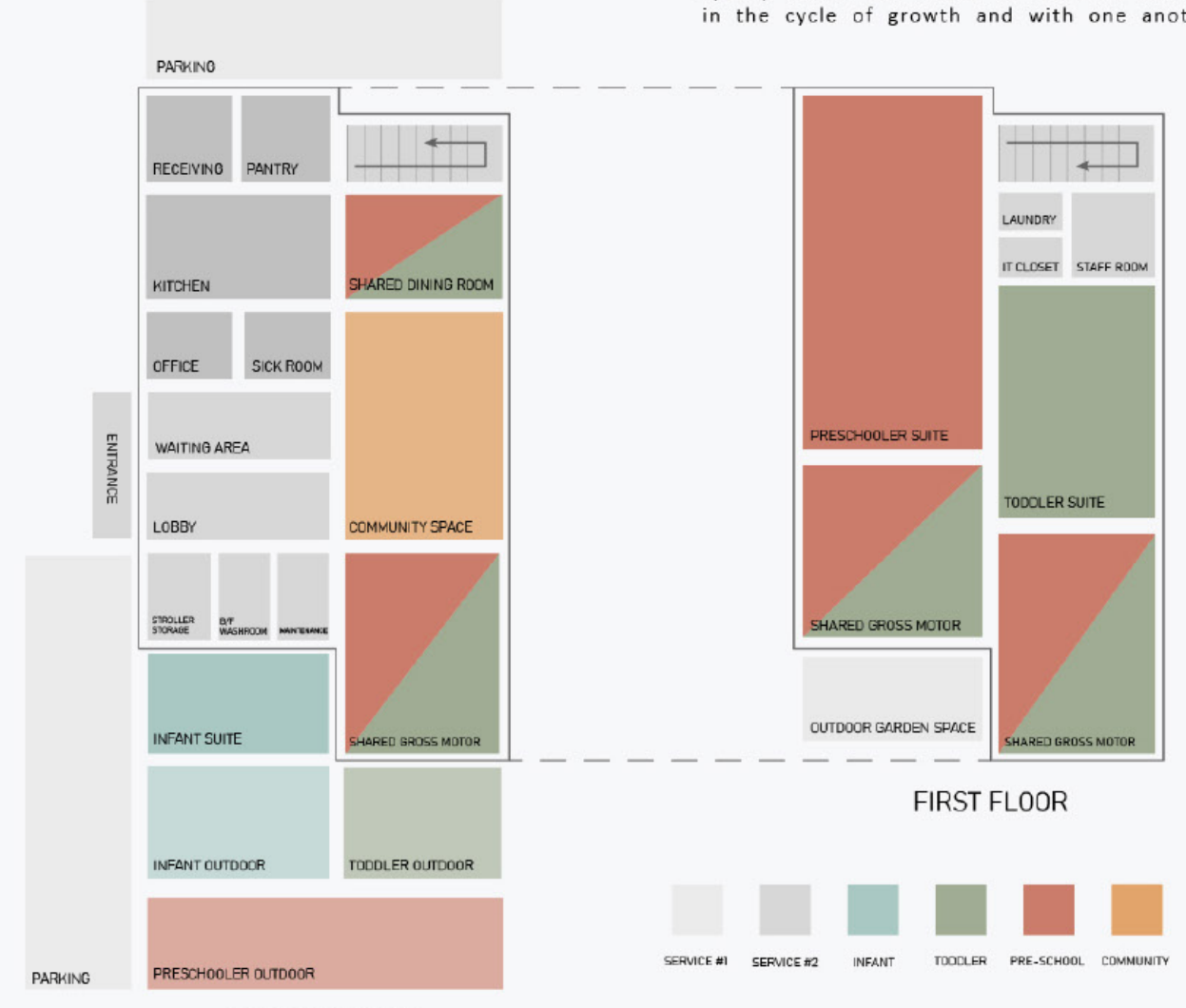
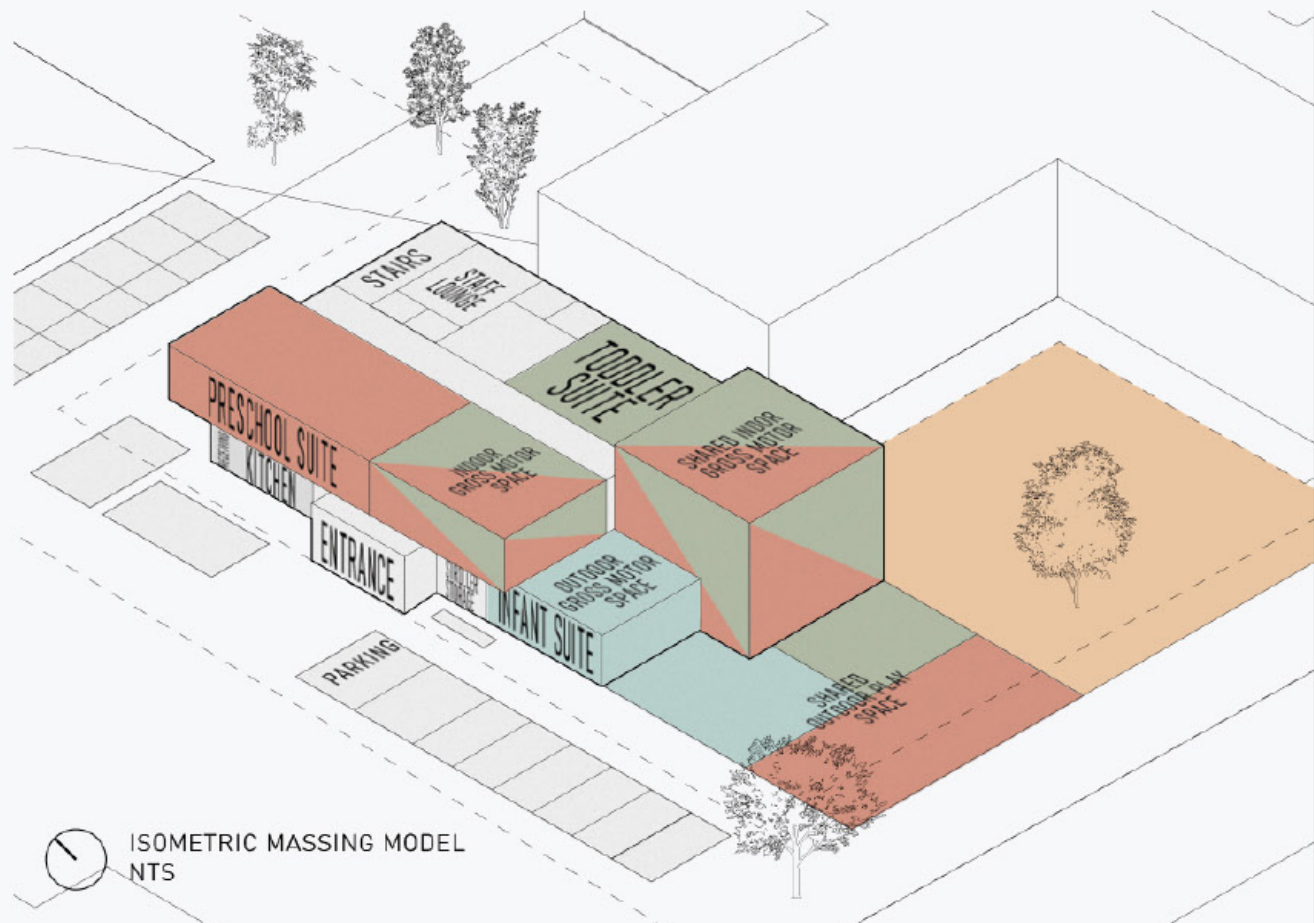


*Epoch* is an exploration of how different scales of time can be experienced through architecture; fostering experiences that highlight periods of growth, development and age as elements with varying rates of change. For example, the path travelled by sunlight in a single day. The growth of vegetation, a proposed integration into the daycare's curriculum, can be observed in days to weeks to months. Materials in the structure such as cedar cladding and weathering steel will age over the course of several years. Finally, the ageing of users in the space as they continue to develop.

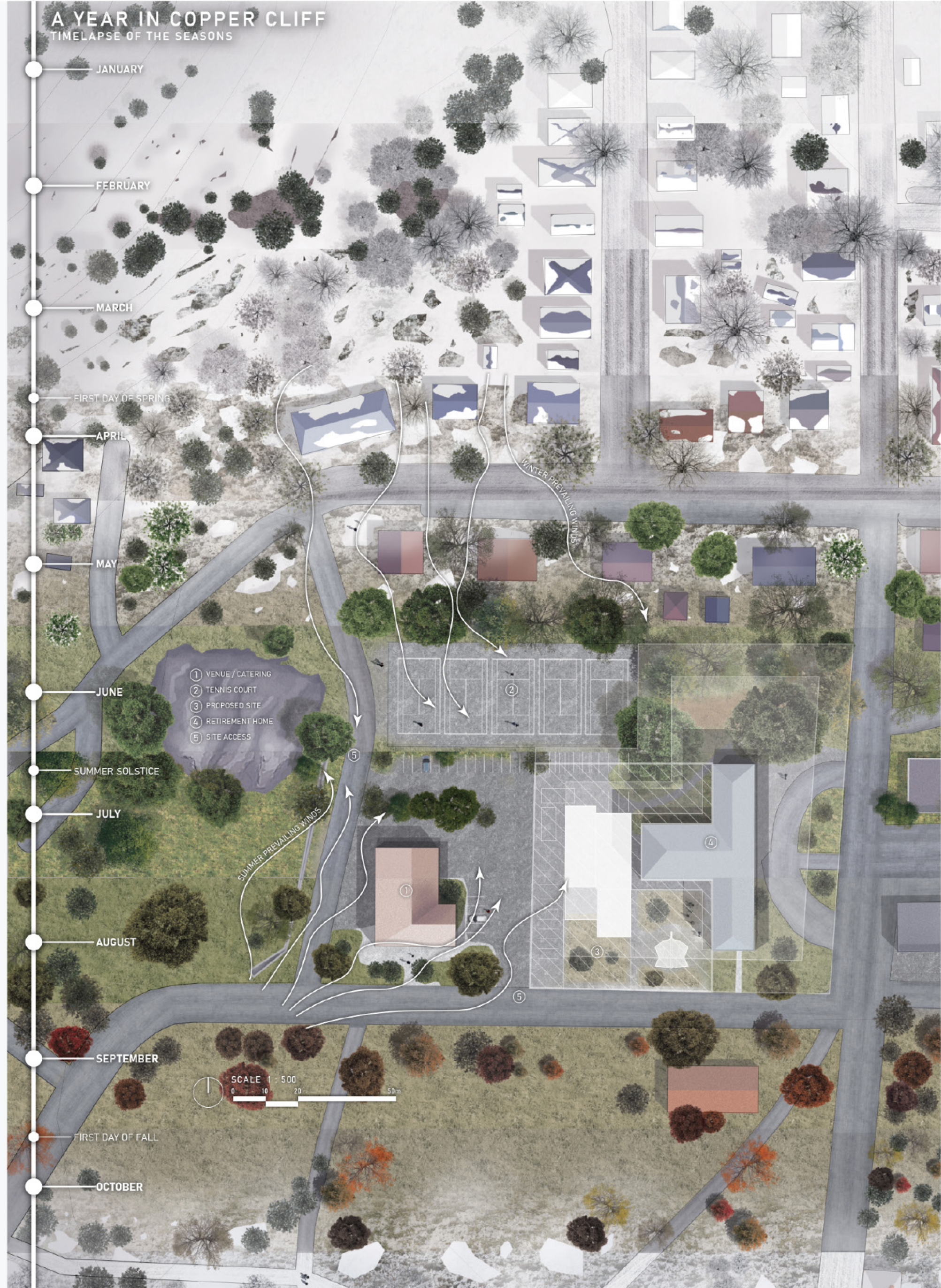
The early learning centre focuses its programming on open, flexible spaces that encourage intergenerational interactions; relying on adjustable elements and adjacencies that invite different age groups (children, adults, seniors, members of the community) to share their experiences with one another. Connected indoor/outdoor spaces such as the first floor garden space and outdoor community space, invite the users to become involved in the cycle of growth and with one another.

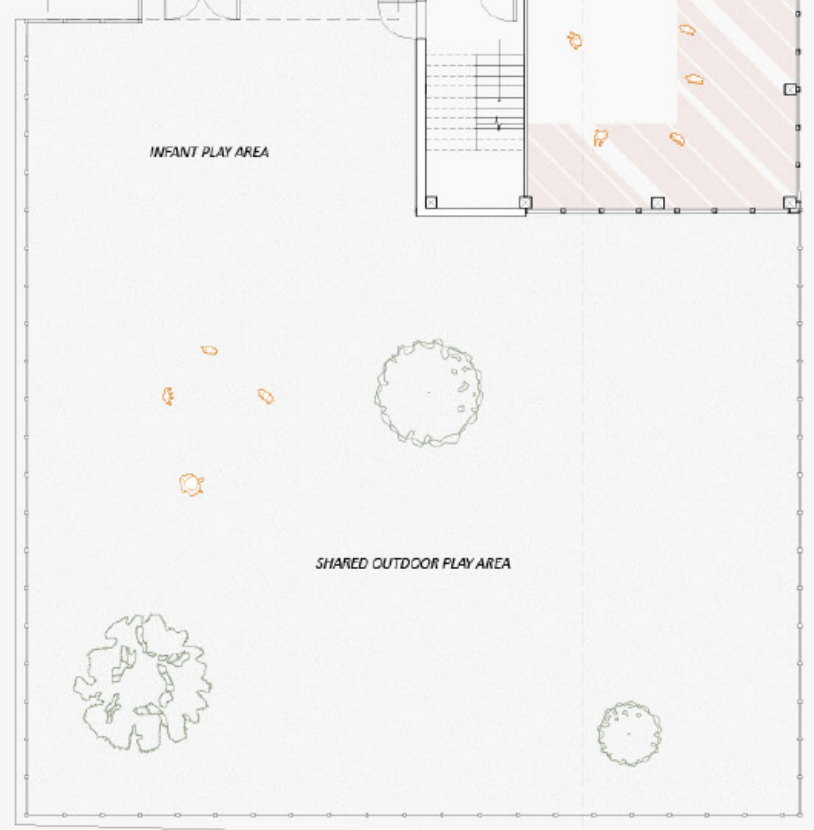
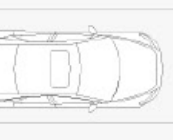
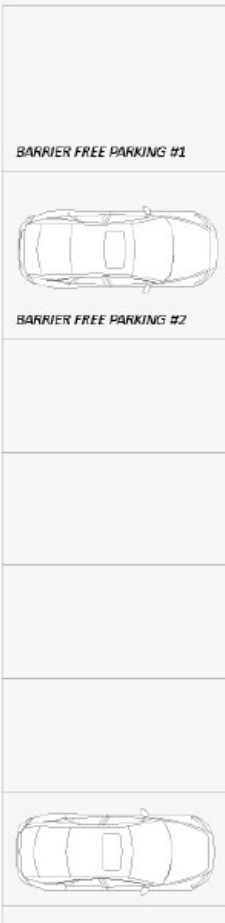
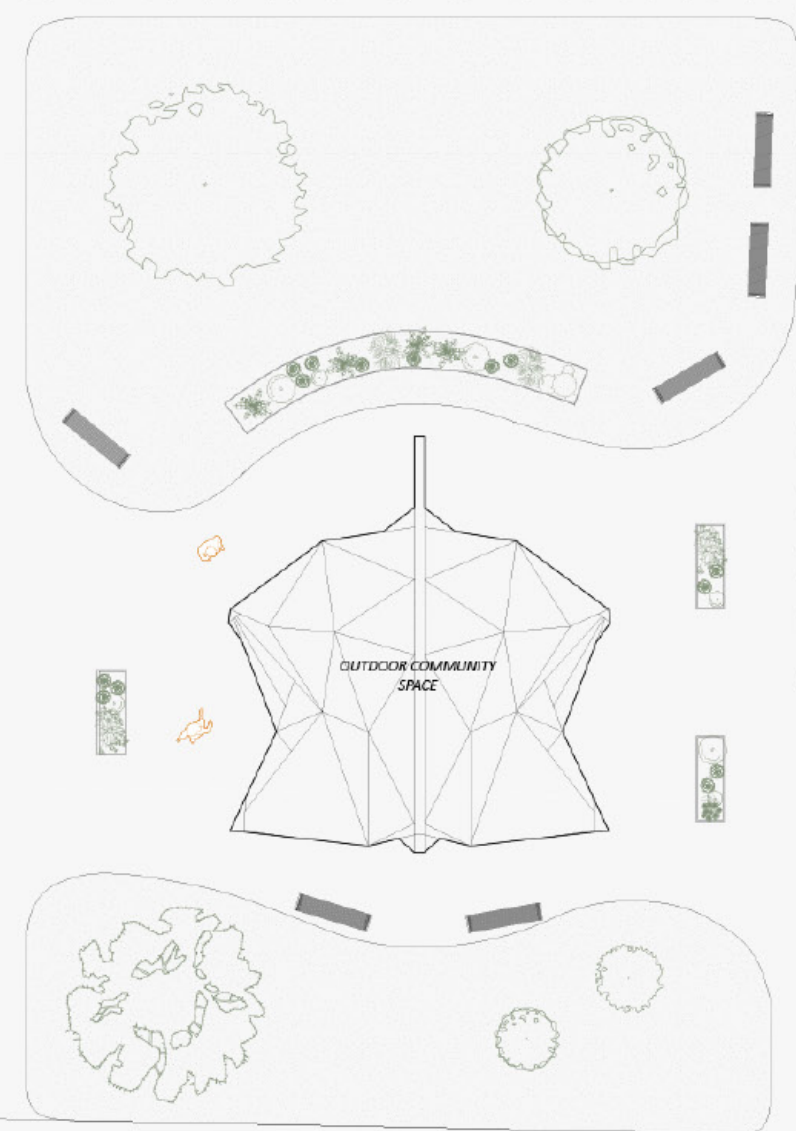
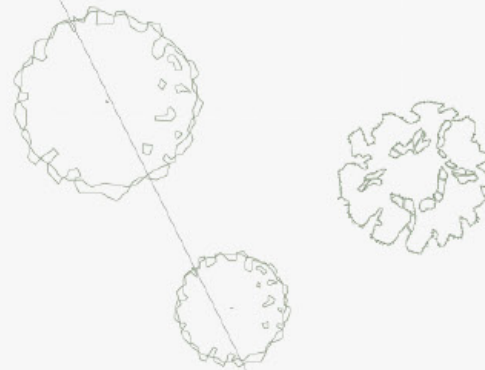


1 CONCEPTUAL BUBBLE DIAGRAMS

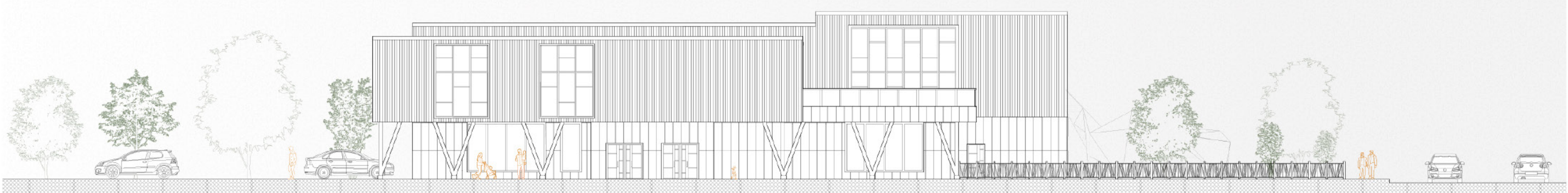


ISOMETRIC MASSING MODEL





GROUND FLOOR PLAN WITH SITE CONTEXT  
1 : 100



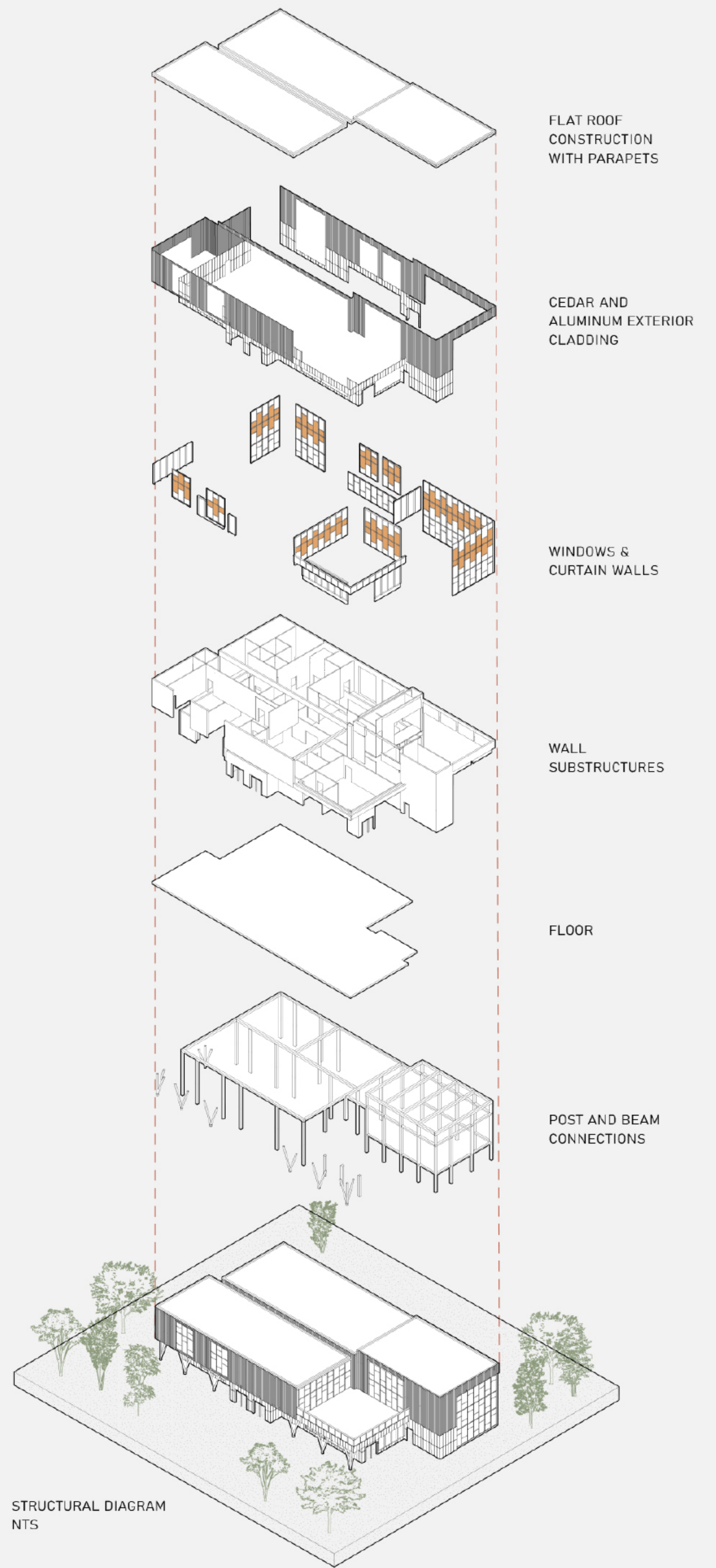
WEST ELEVATION  
1 : 100



SECTION A  
1 : 100



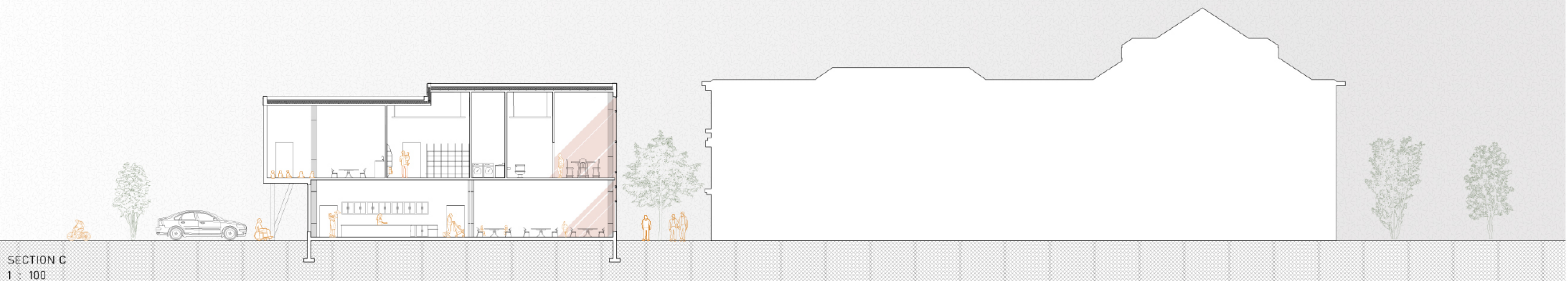
FIRST FLOOR PLAN  
1 : 100



STRUCTURAL DIAGRAM  
NTS



SECTION B  
1 : 100



SECTION C  
1 : 100

