

# BIND

Carlos Miguel Ucat  
ARCH 3505 EL  
Final Design

The historically enriched town of Copper Cliff is recognized for its intact community that underwent spatial segregation, resulting in the separation of the population into several settlements. The predominant factor of the experienced segregation is used as inspiration to design an early learning center that begins to bind independent spaces, that are reflected upon the varying settlements from the past. The creation of independent areas that create an enclosed and protected environment at the core for children to learn and discover, begin to bind through the influence of circulation amongst the spaces that enhance the domains of the children. The circulation will impact the sequence of spaces, thresholds, and atmospheres encountered through movement, that will prepare the child to transition from one space to another. With an educational and experiential approach where children are given the opportunity to learn through discovery, breaks the condition of separation through circulation and community that unifies the independent spaces.

"Circulation not only provides access to different areas within a building but also serves to BIND together separate and disparate spaces" (Brooker and Stone, 2004)

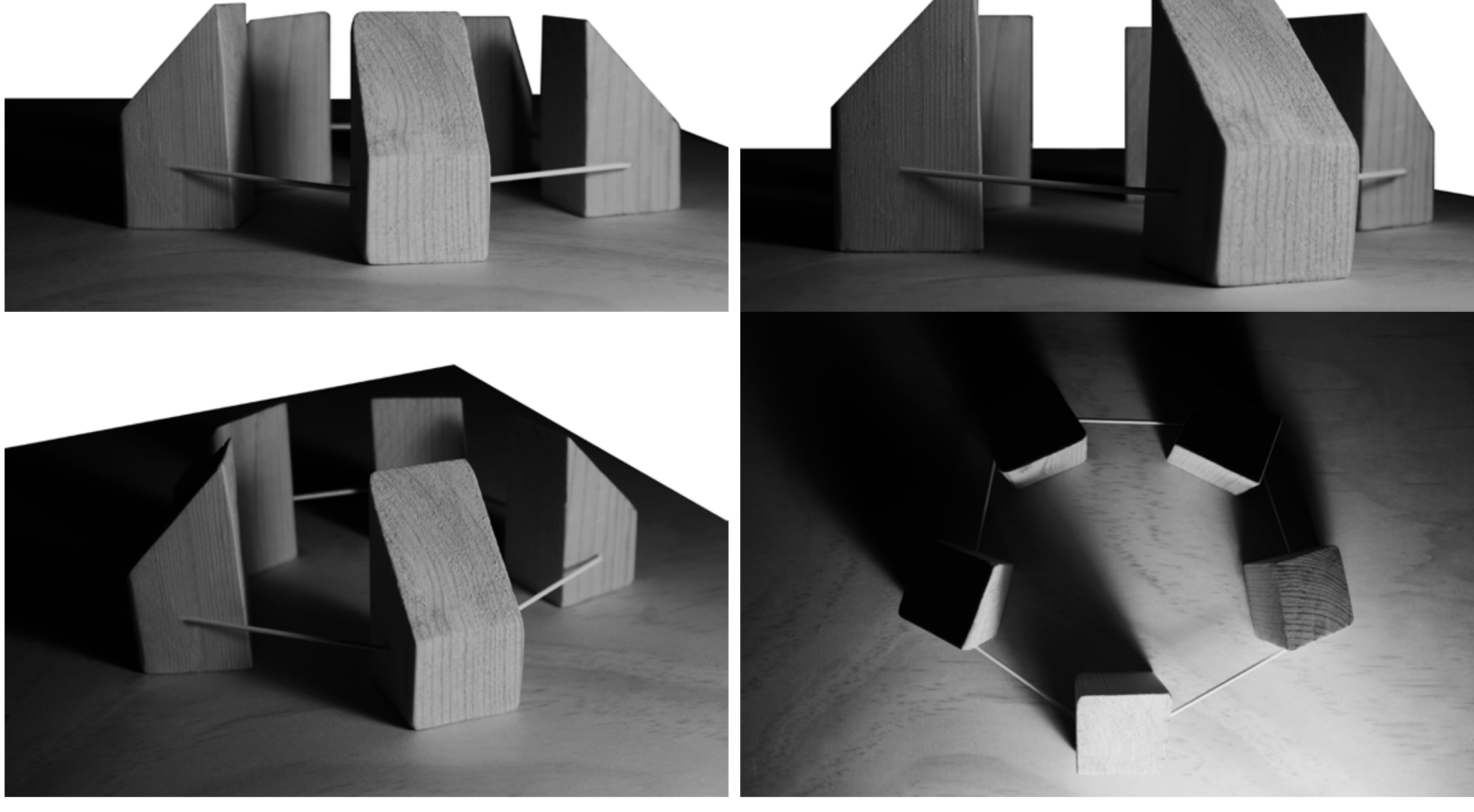
- BIND**
- To tie together
  - To make secure by tying
  - To form a cohesive mass
  - To protect, strengthen, or decorate by a band or binding

**CIRCULATION**

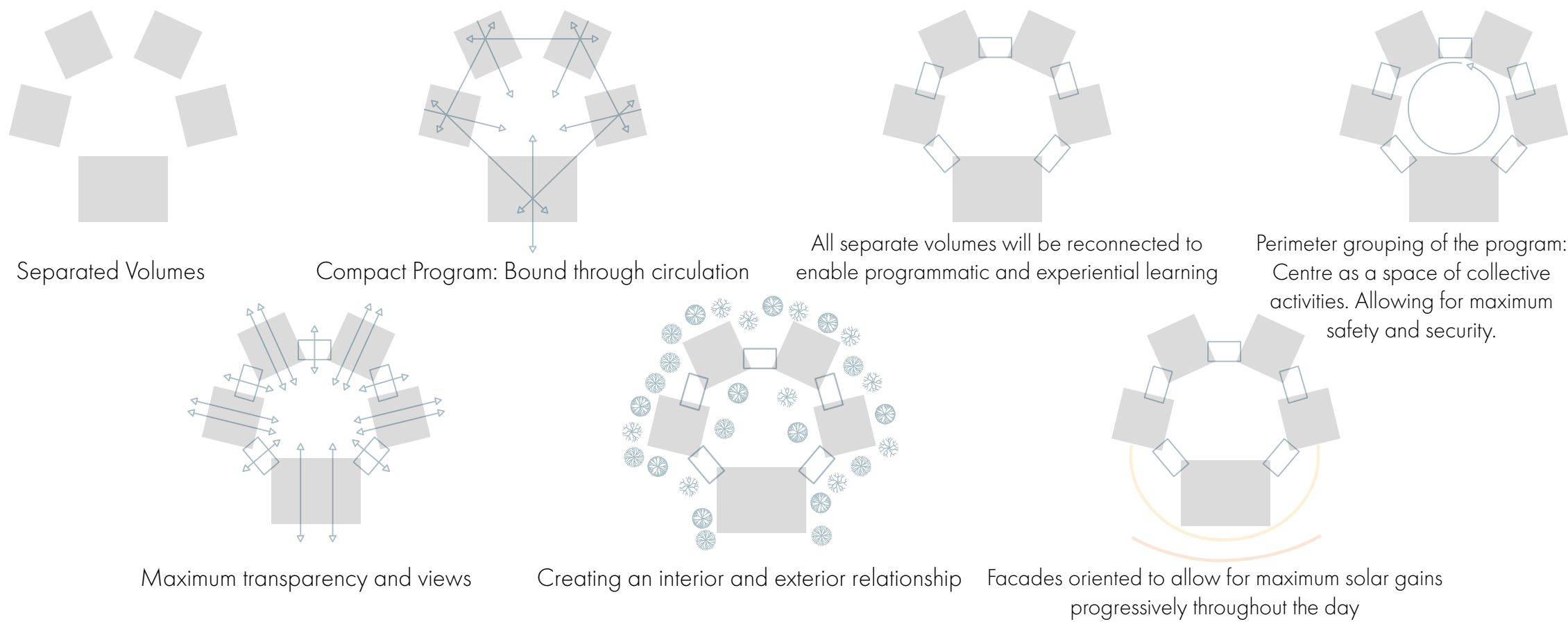
- Horizontal vs. Vertical
- Public vs. Private



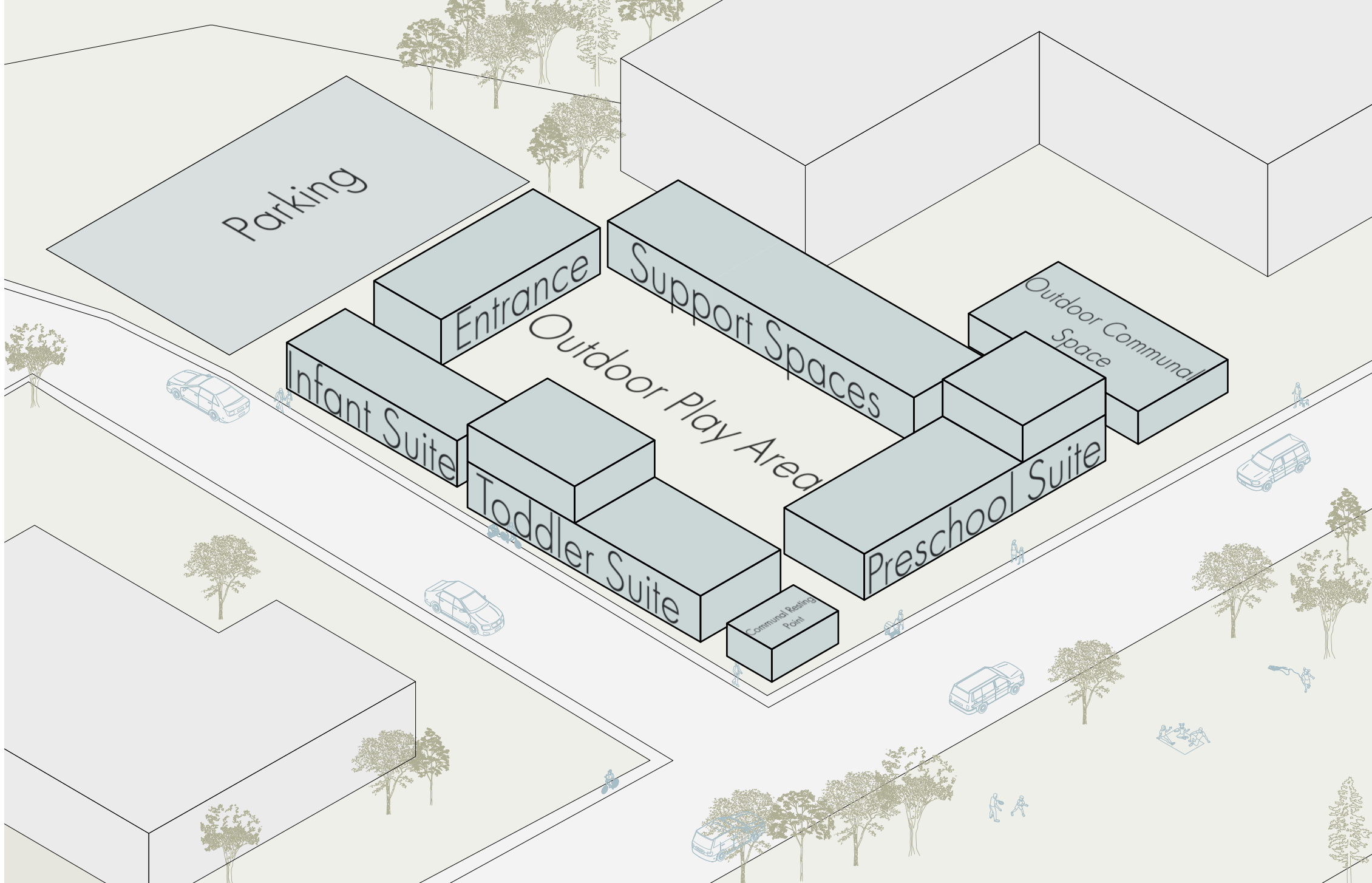
**CONCEPT MODEL**



**CONCEPT DIAGRAM**



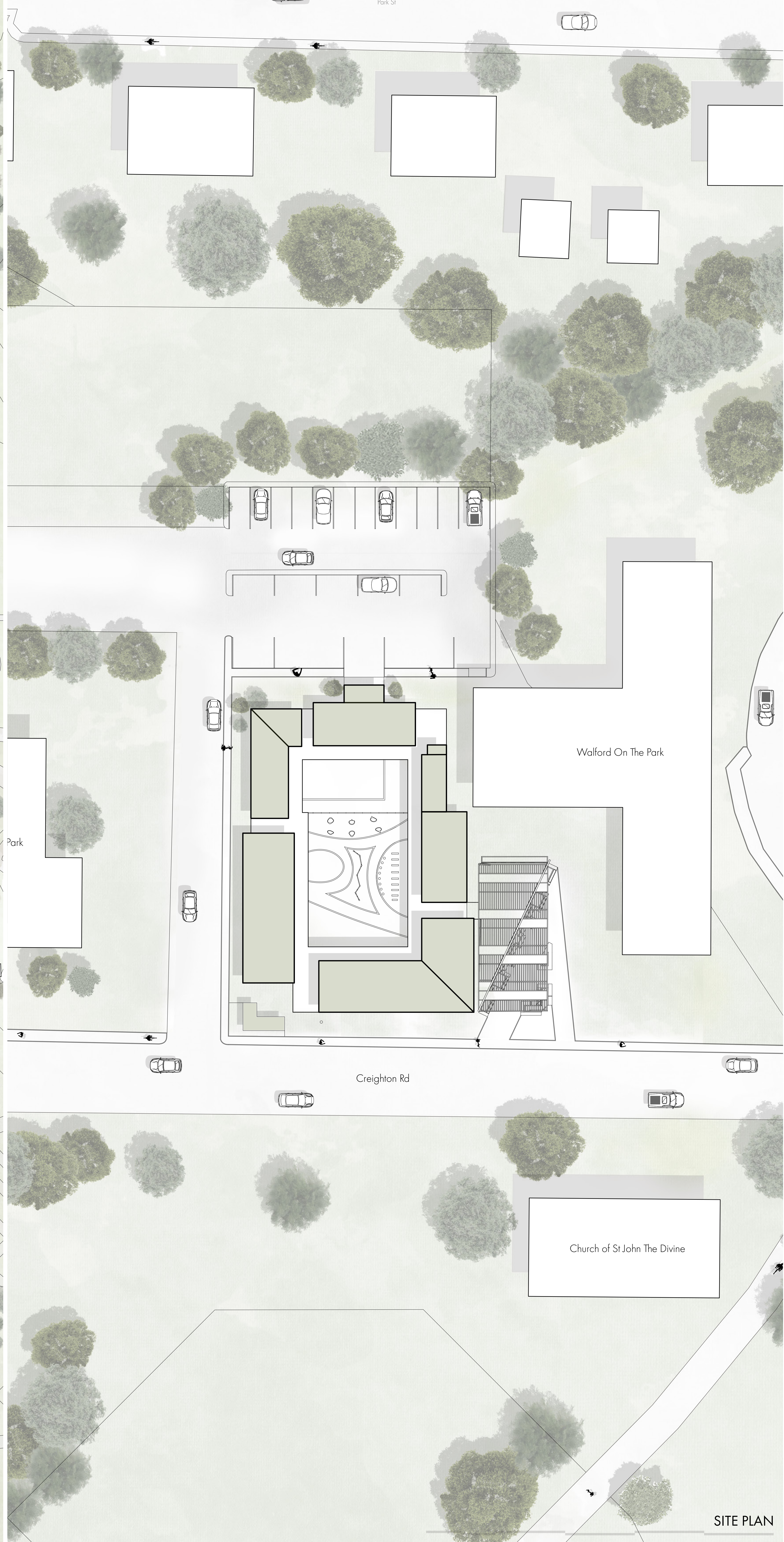
**MASSING MODEL**



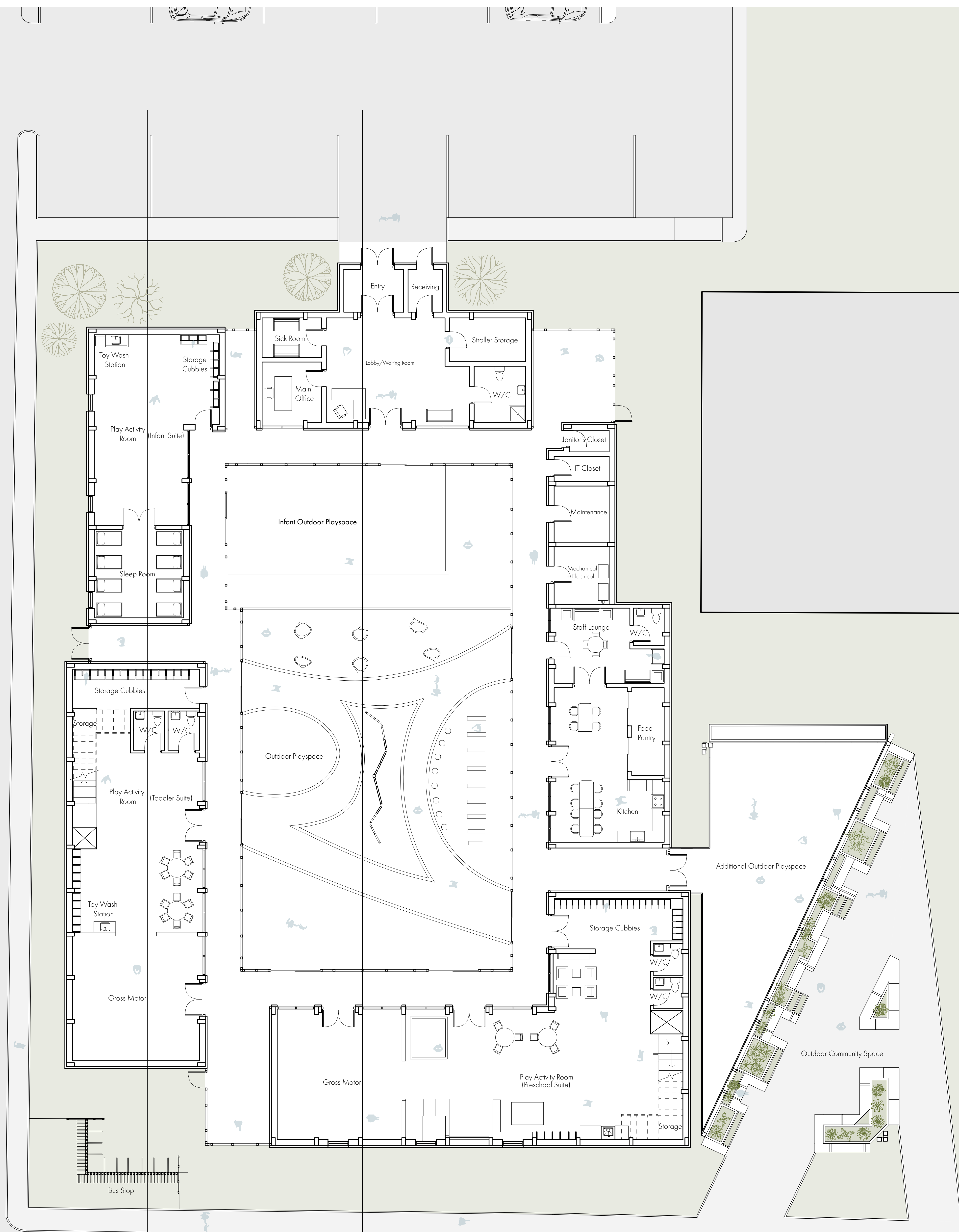
**PARTI MODEL**



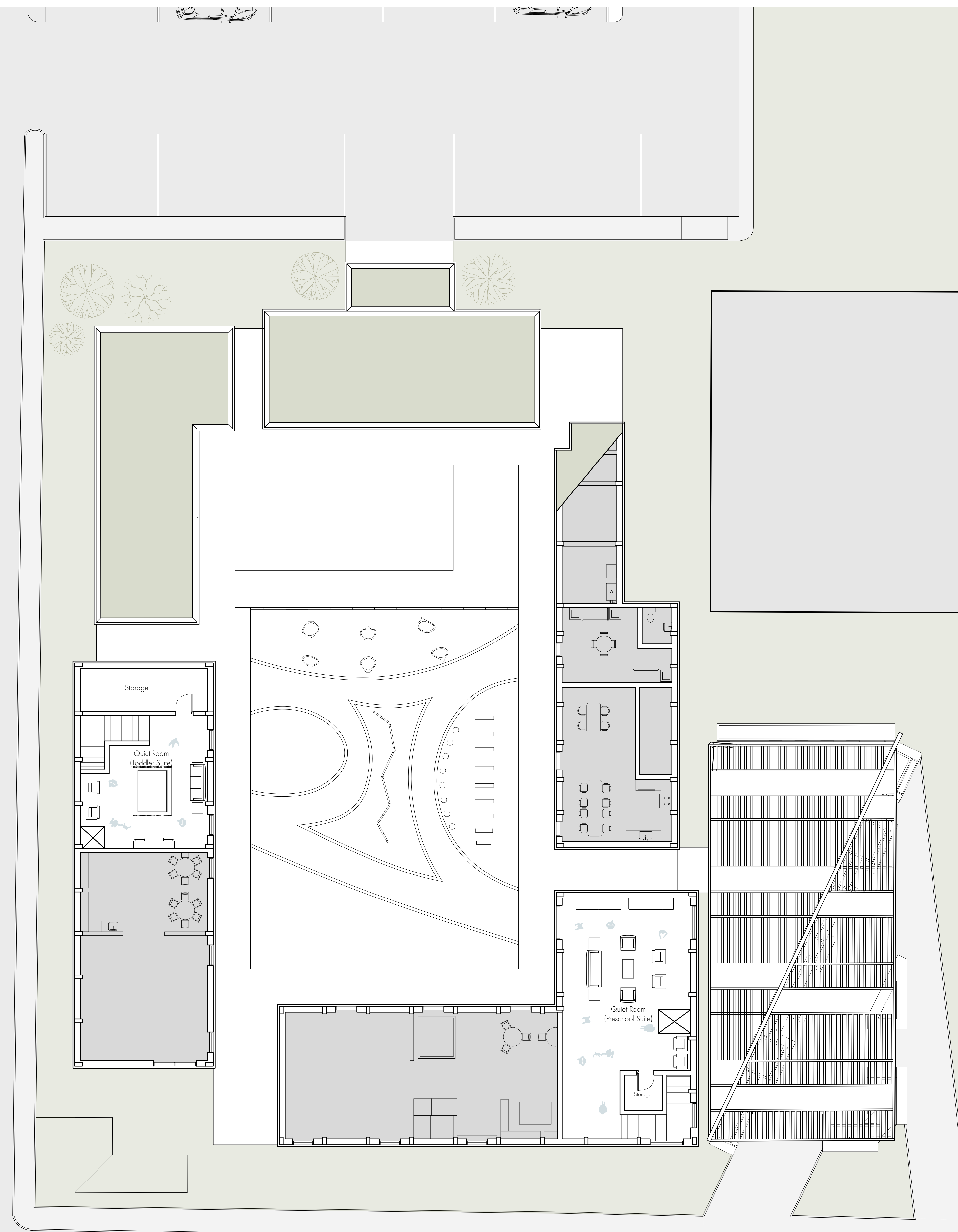
SITE CONTEXT



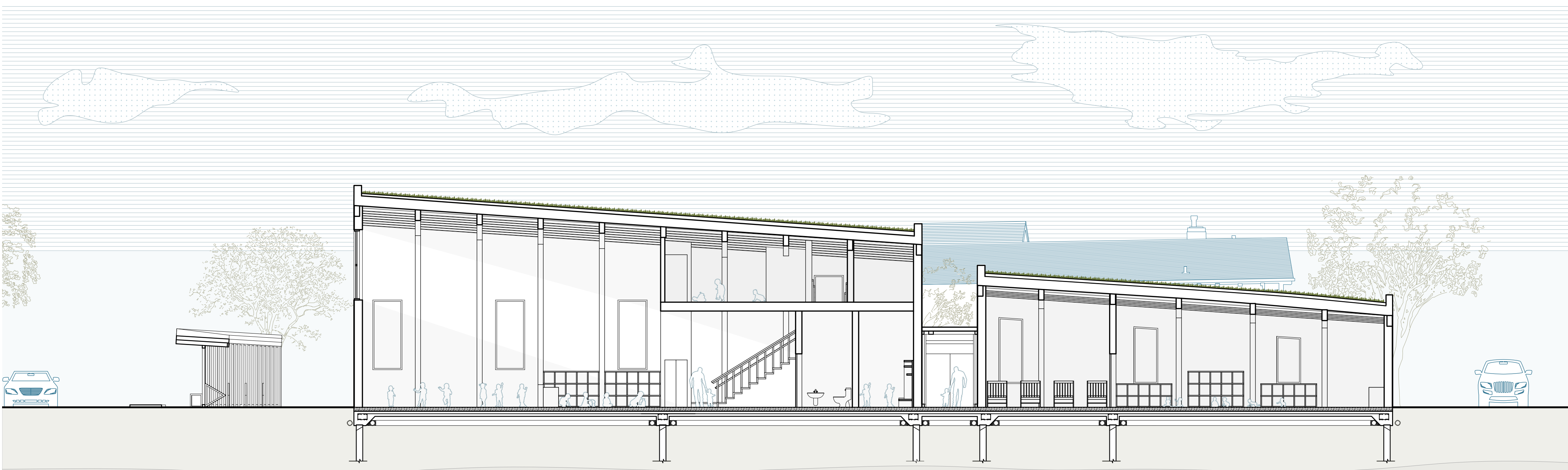
SITE PLAN



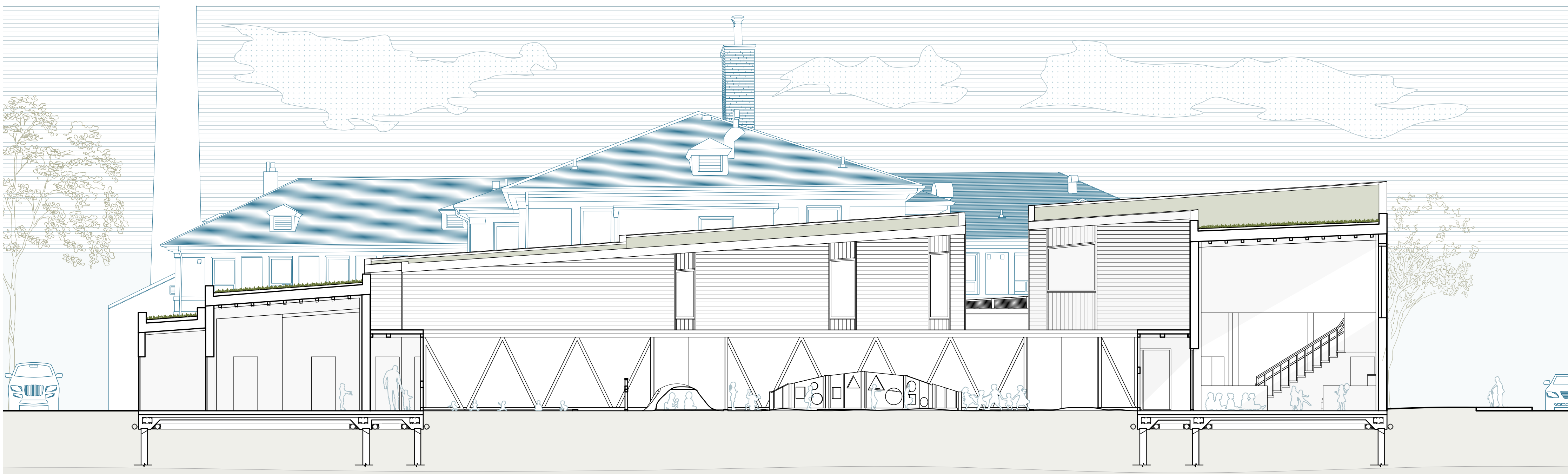
GROUND LEVEL FLOOR PLAN



SECOND LEVEL FLOOR PLAN



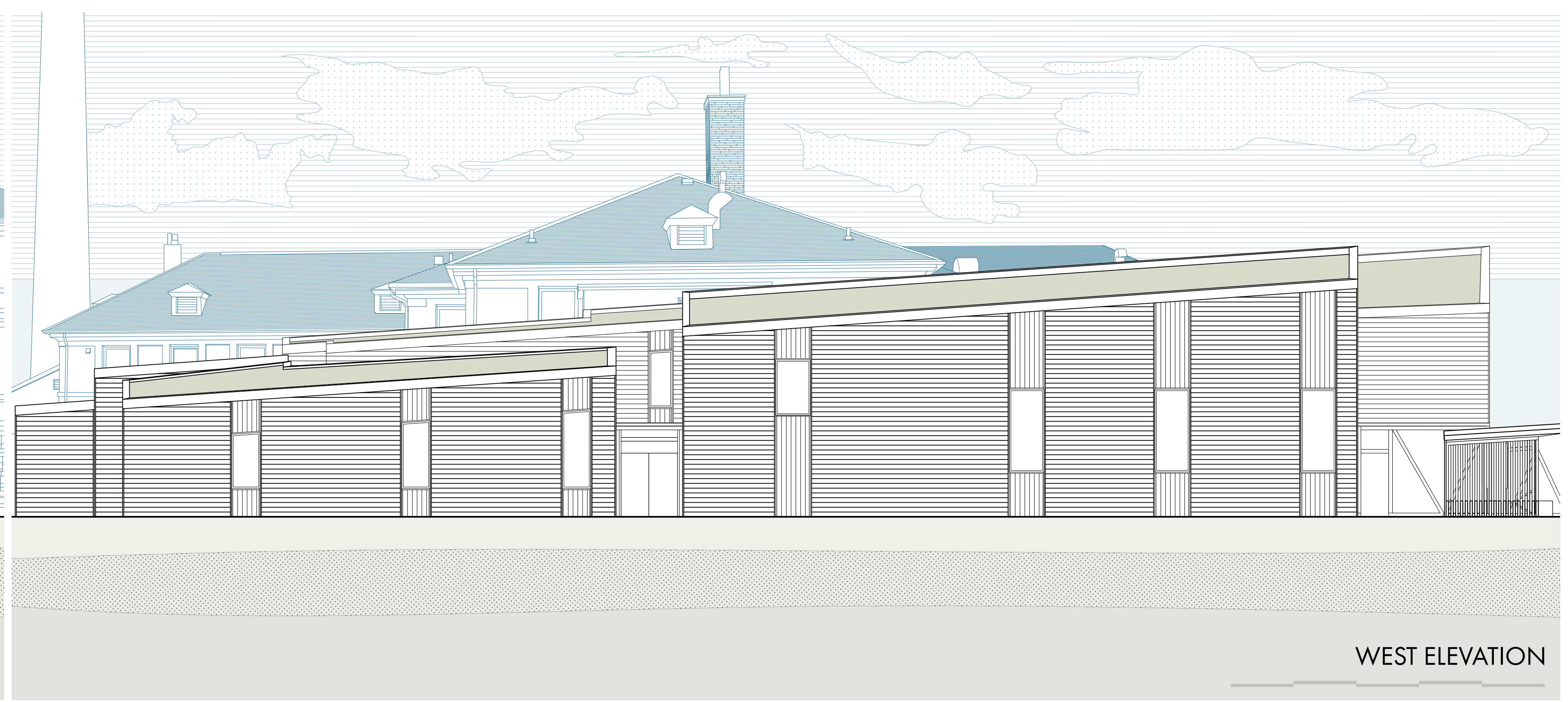
SECTION A



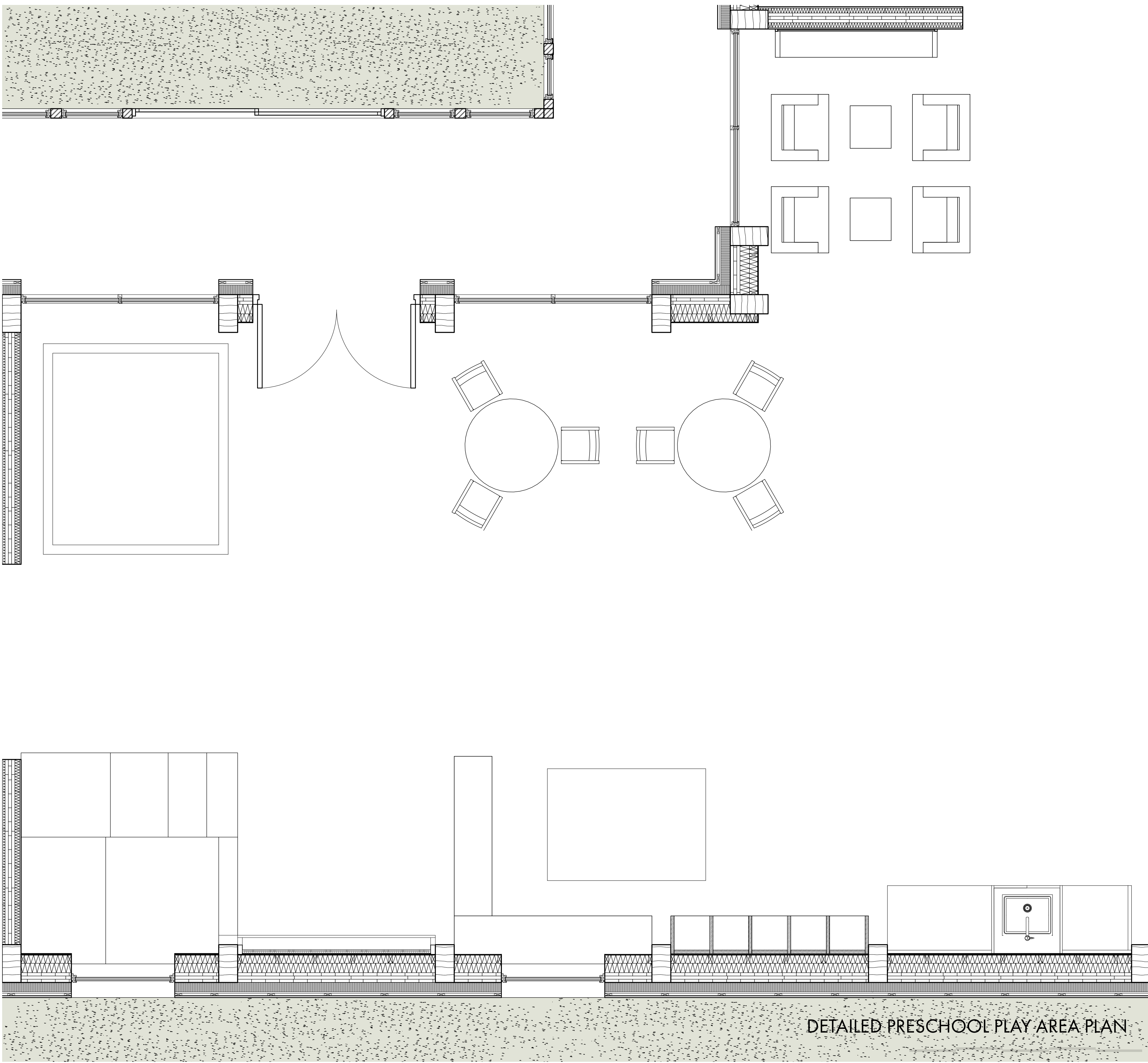
SECTION B



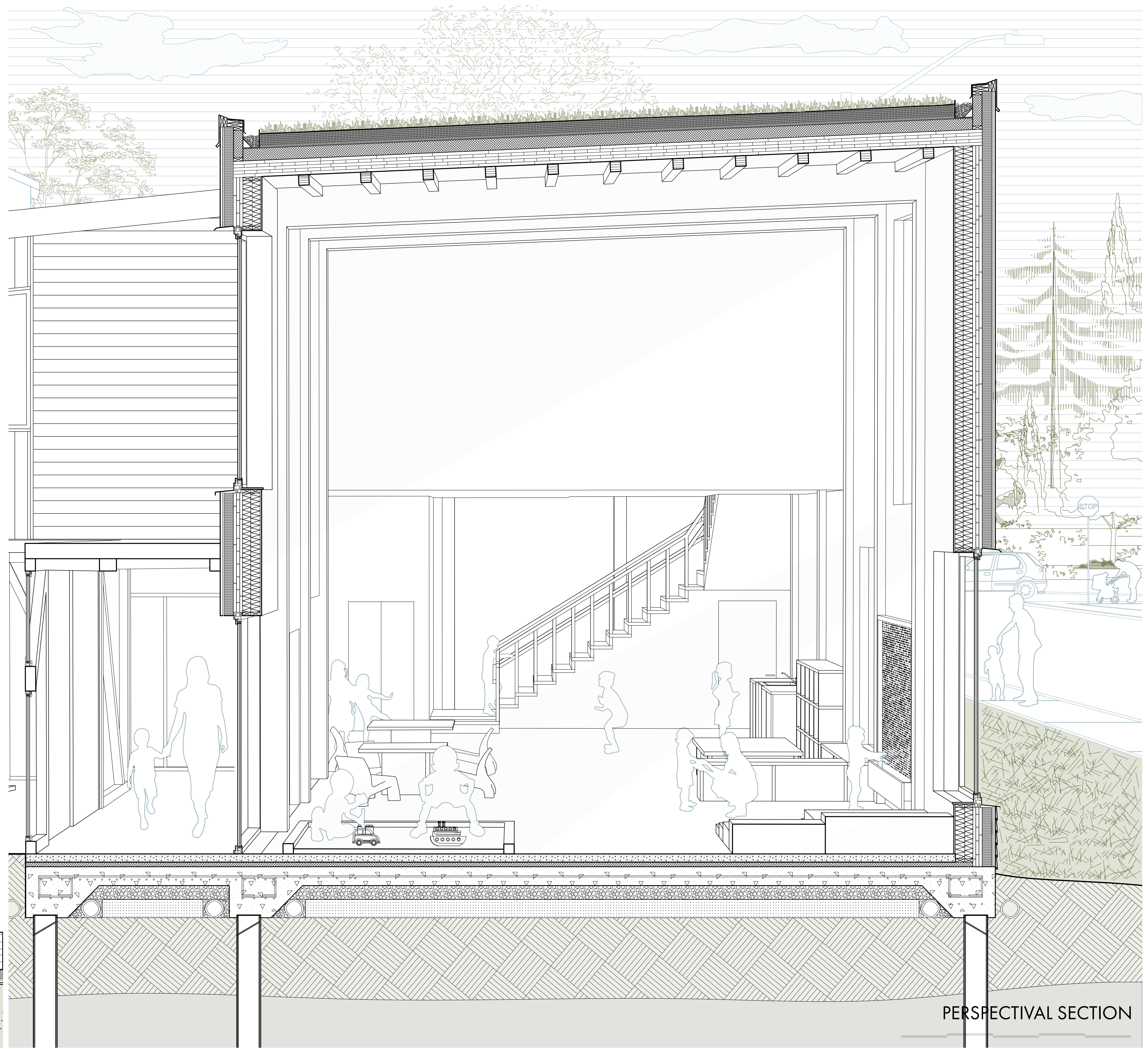
SOUTH ELEVATION



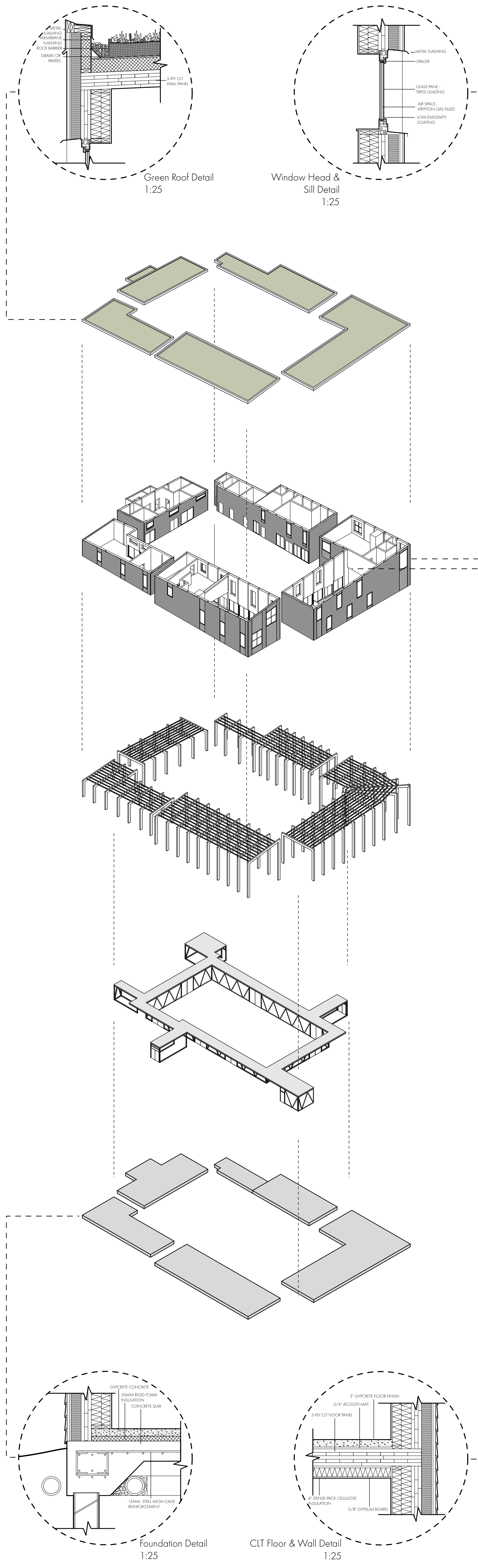
WEST ELEVATION



DETAILED PRESCHOOL PLAY AREA PLAN



PERSPECTIVAL SECTION



EXPLODED BUILDING ISOMETRIC & DETAILS

