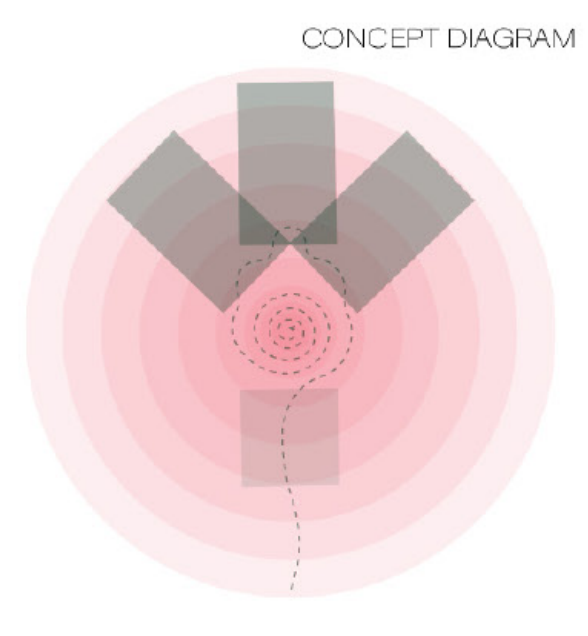
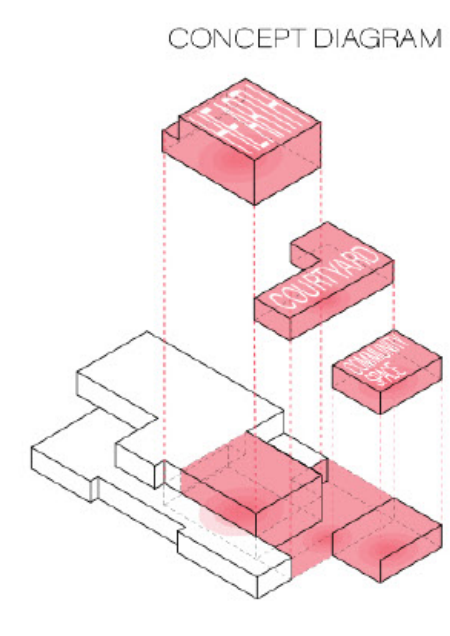
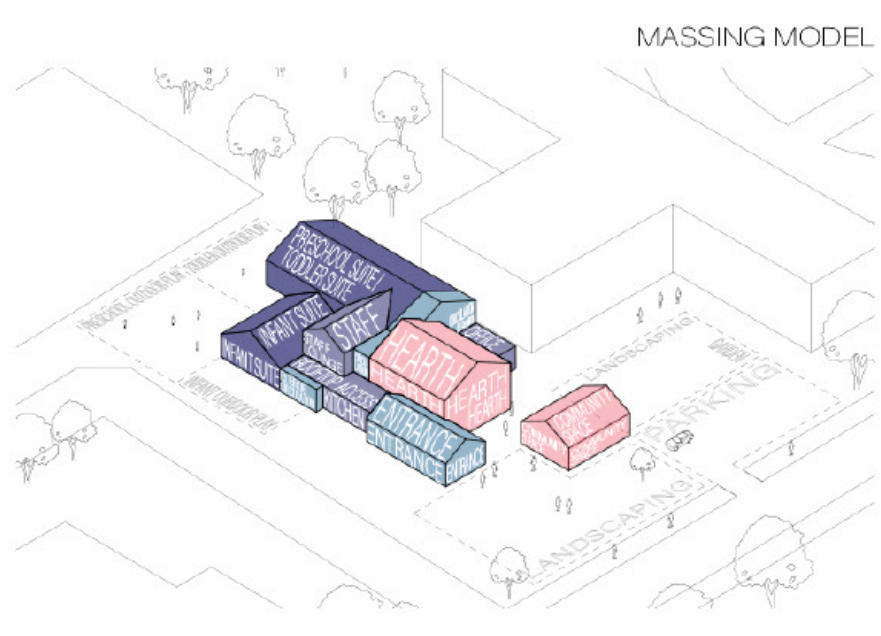
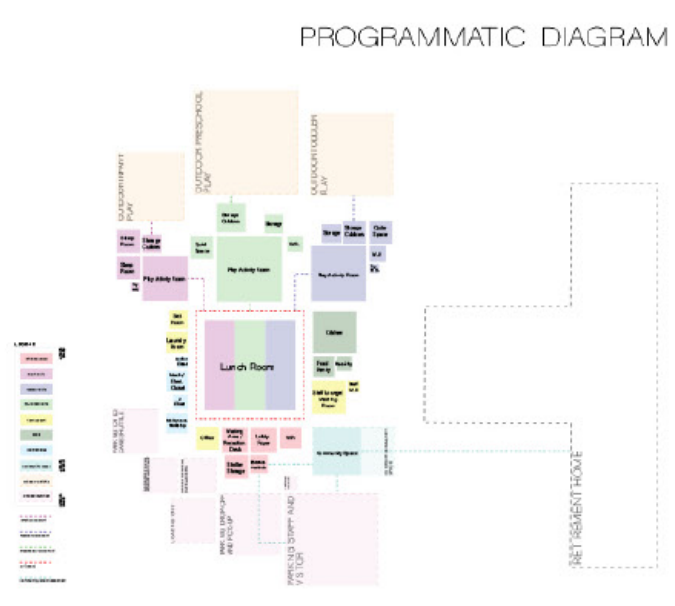


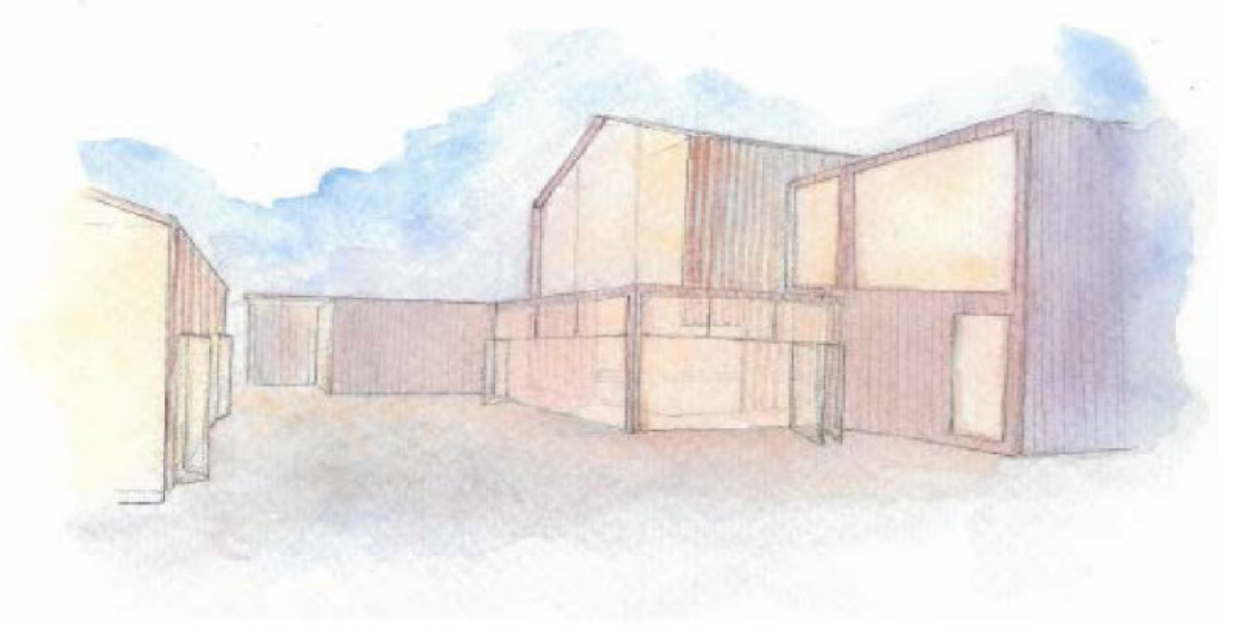
CONTEXT MAP  
SCALE 1:4000 AND 1:750

## HEARTH AND HOME

For many children attending early childhood development centres, it is the first time they will spend away from their parents for a significant length of time. Therefore, it is important for children attending learning centers to gain a sense of comfort and security from the space they are in. By introducing characteristics of the 'typical' home, this can be achieved. A large 'lunch room' acts as the central hearth, creating a hub for daily life, from eating and dramatic play to shaping community and connections through conversation. Secondary hearths are visible in the community space, which is a reinterpreted library that focuses on verbal storytelling, like the telling of tales around a campfire. This creates important learning opportunities for children, but also draws in the community as a whole, especially since the library is located close to the retirement home, a rich resource of stories and life lessons. A courtyard created between the main building and the community space acts as a final hearth, acting as an expansion space for community gatherings.



CONCEPT SKETCHES



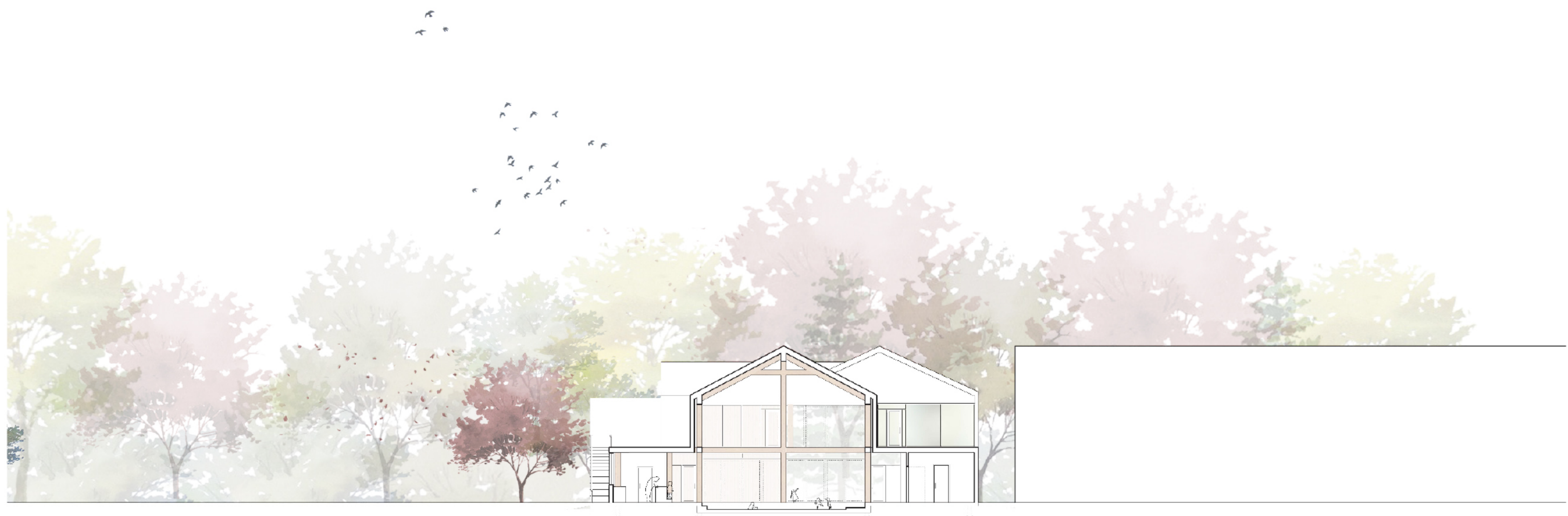
EXTERIOR RENDER





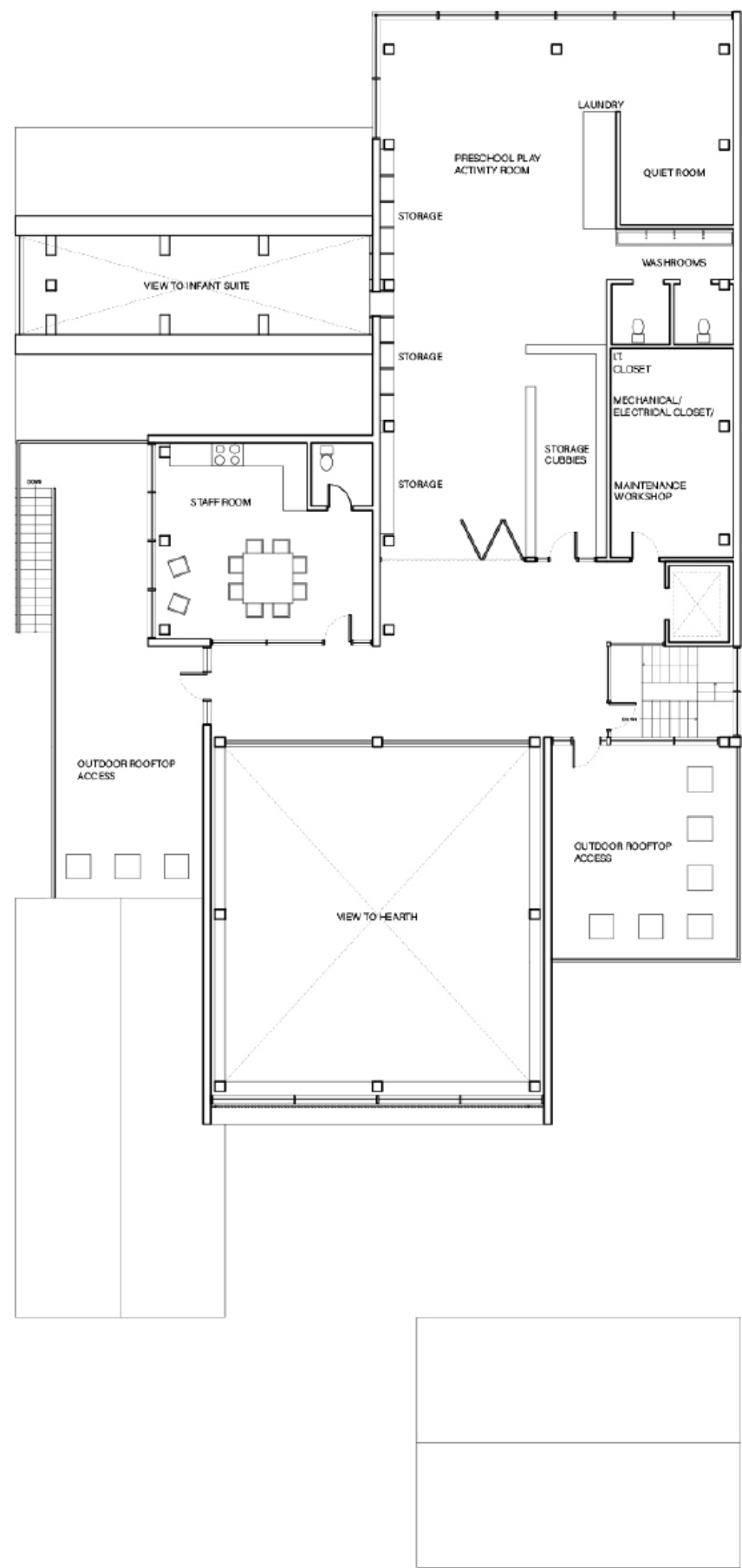




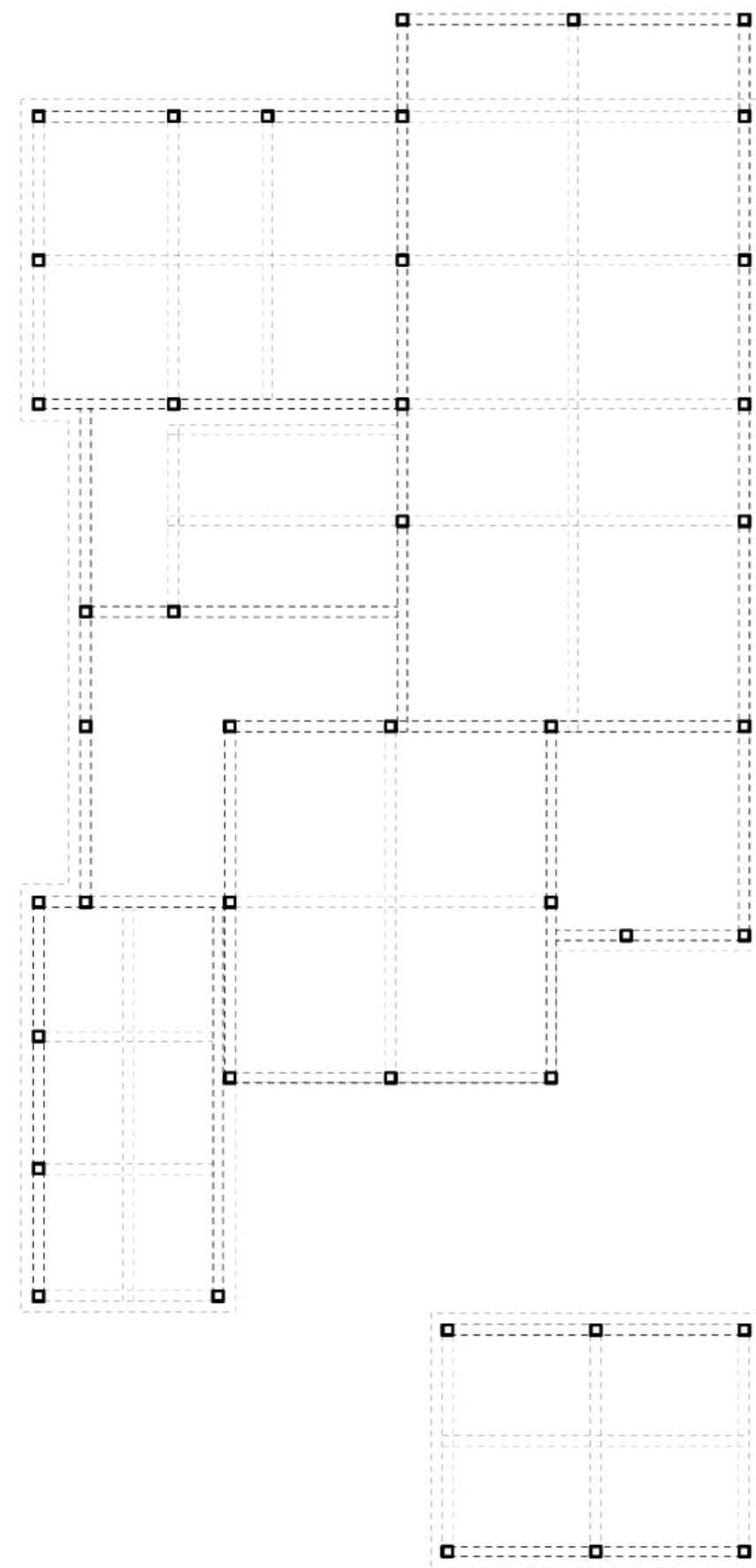


NORTH SECTION: THROUGH HEARTH  
SCALE 1:100

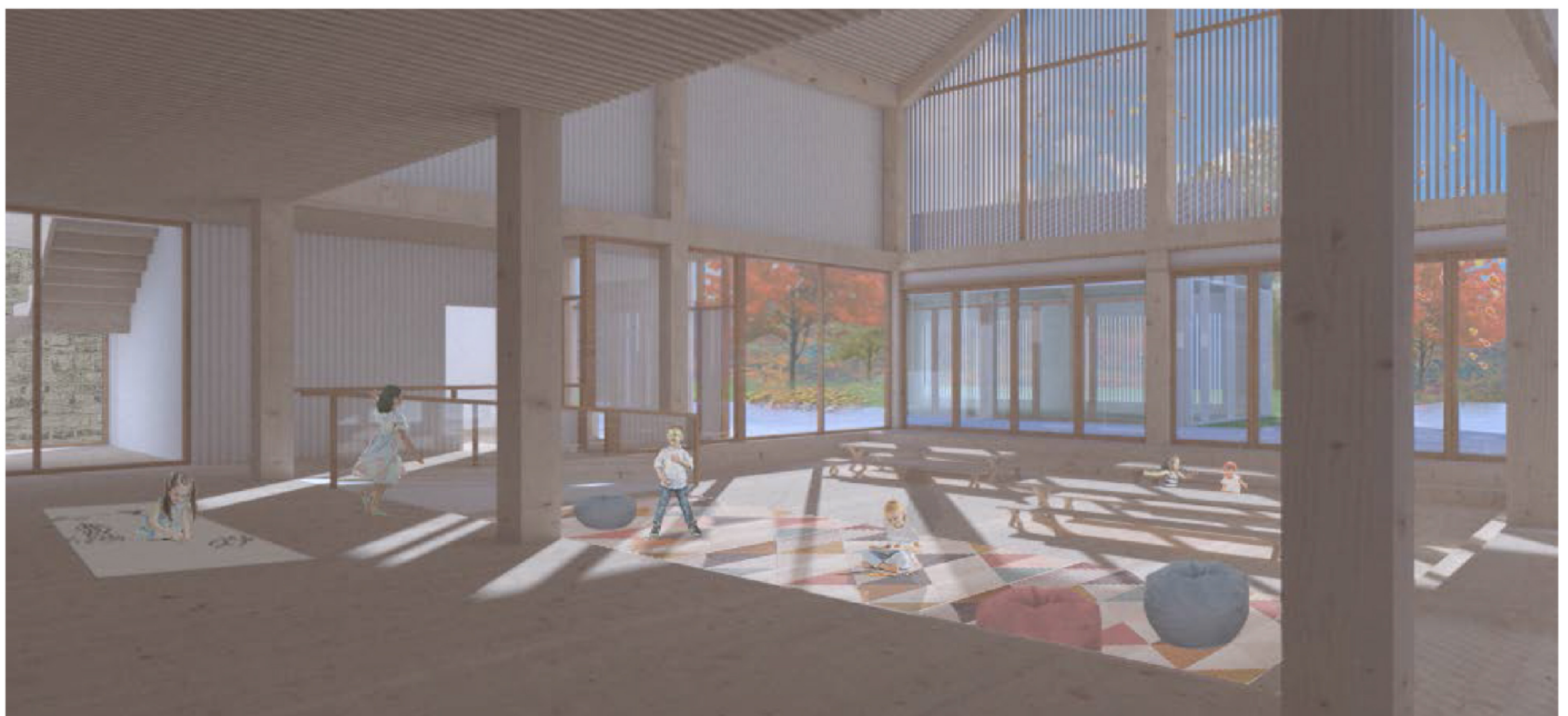
SECOND FLOOR PLAN  
SCALE 1:100



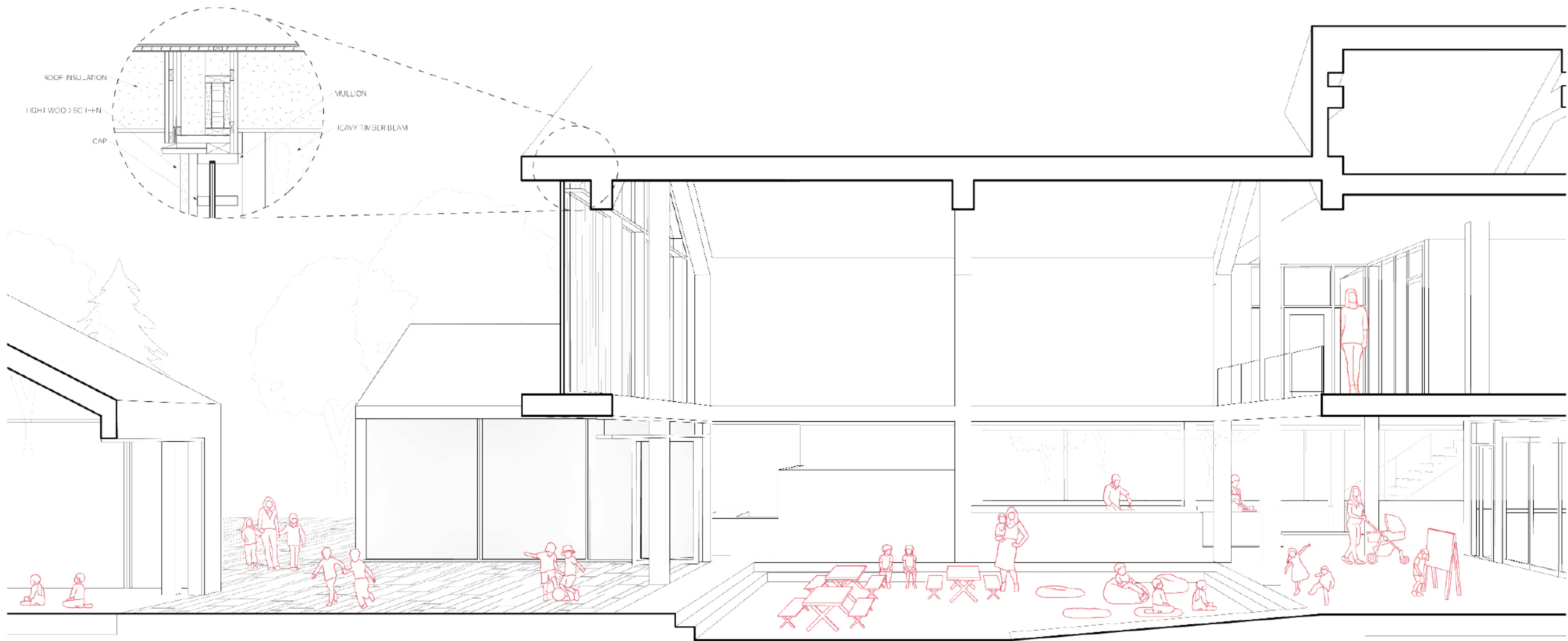
STRUCTURAL DIAGRAM  
SCALE 1:100



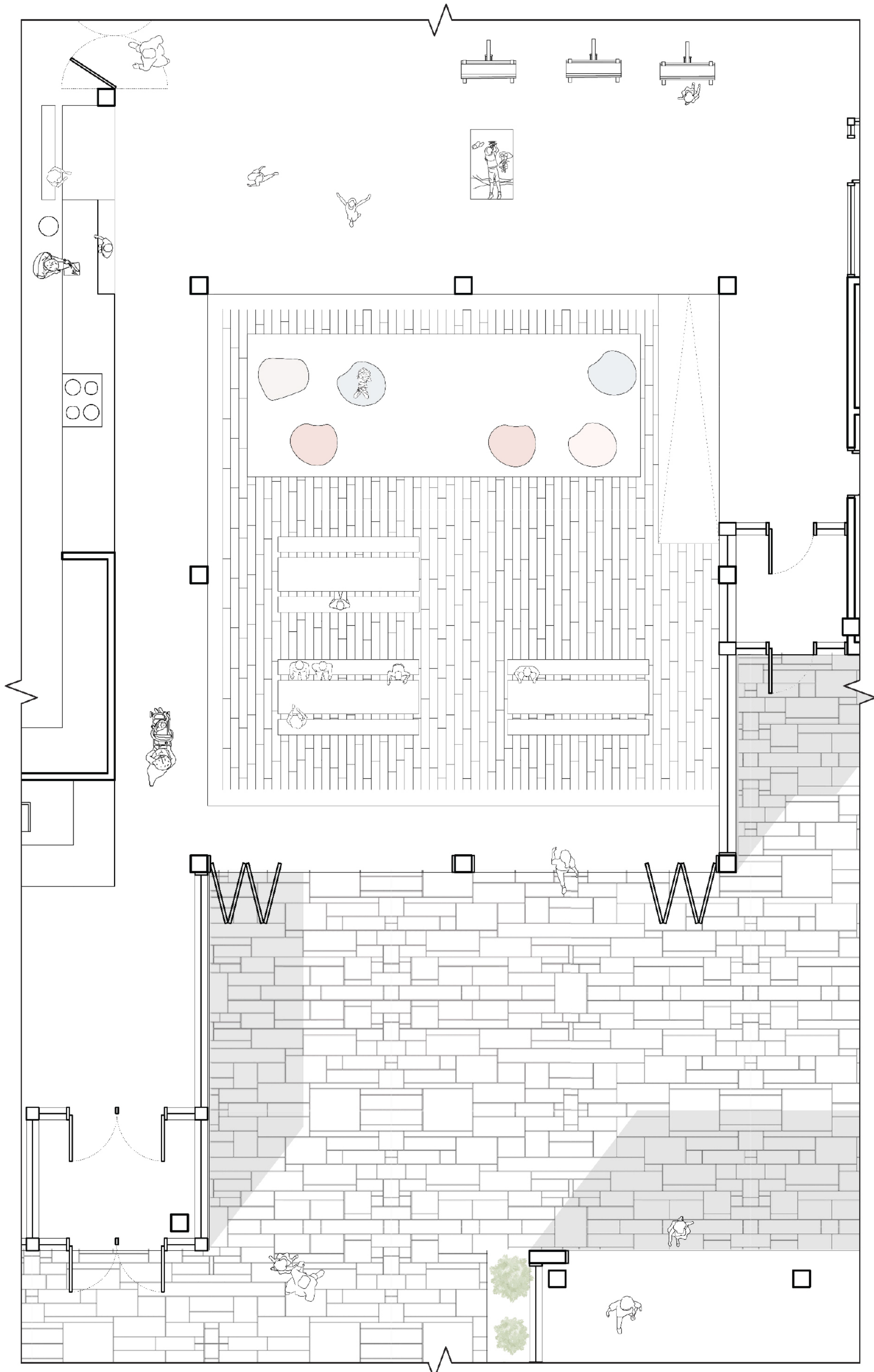
INTERIOR RENDER: HEARTH







PARTIAL BUILDING SECTION: THROUGH HEARTH  
SCALE 1:25



PARTIAL BUILDING PLAN: HEARTH  
SCALE 1:25