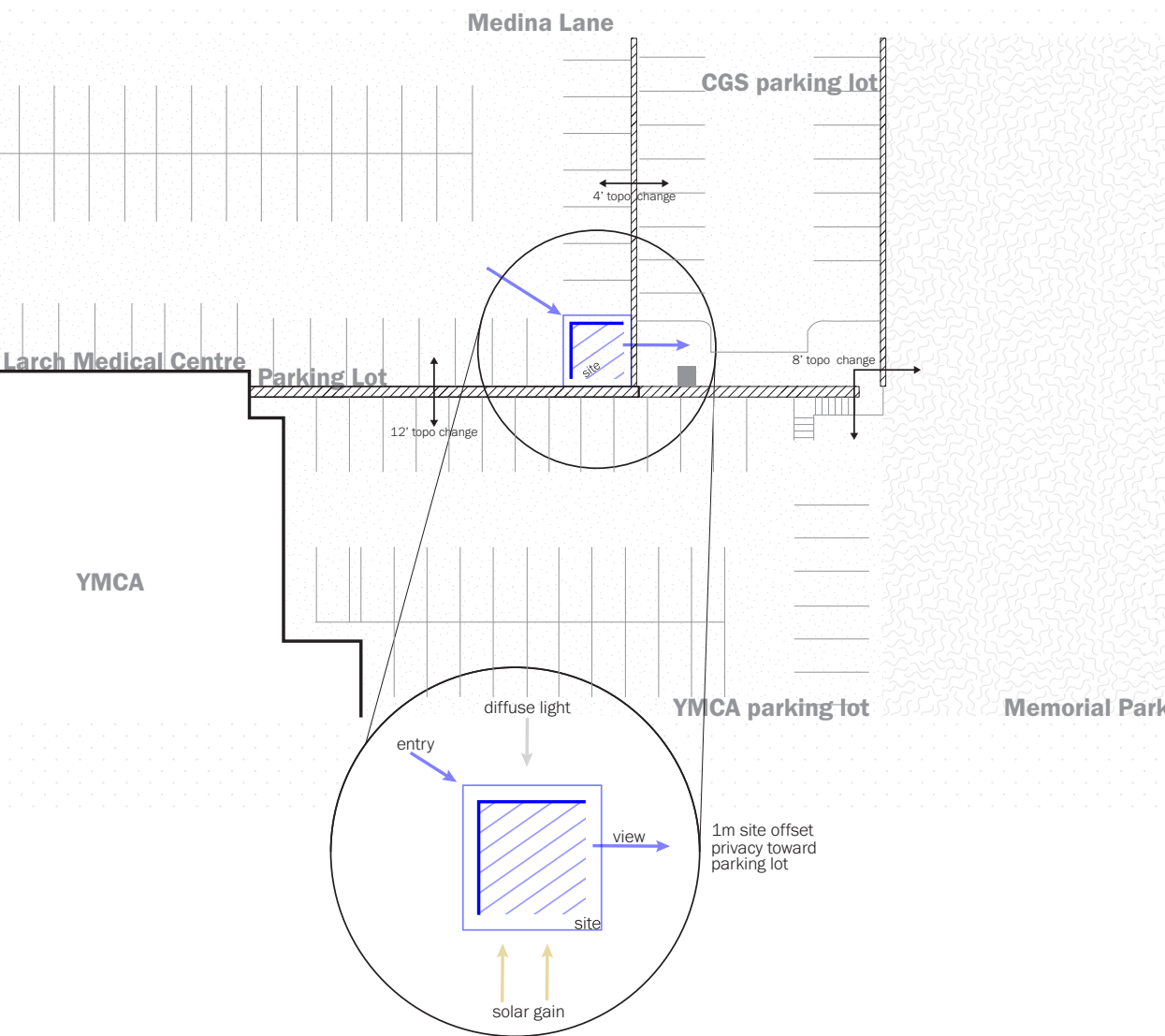
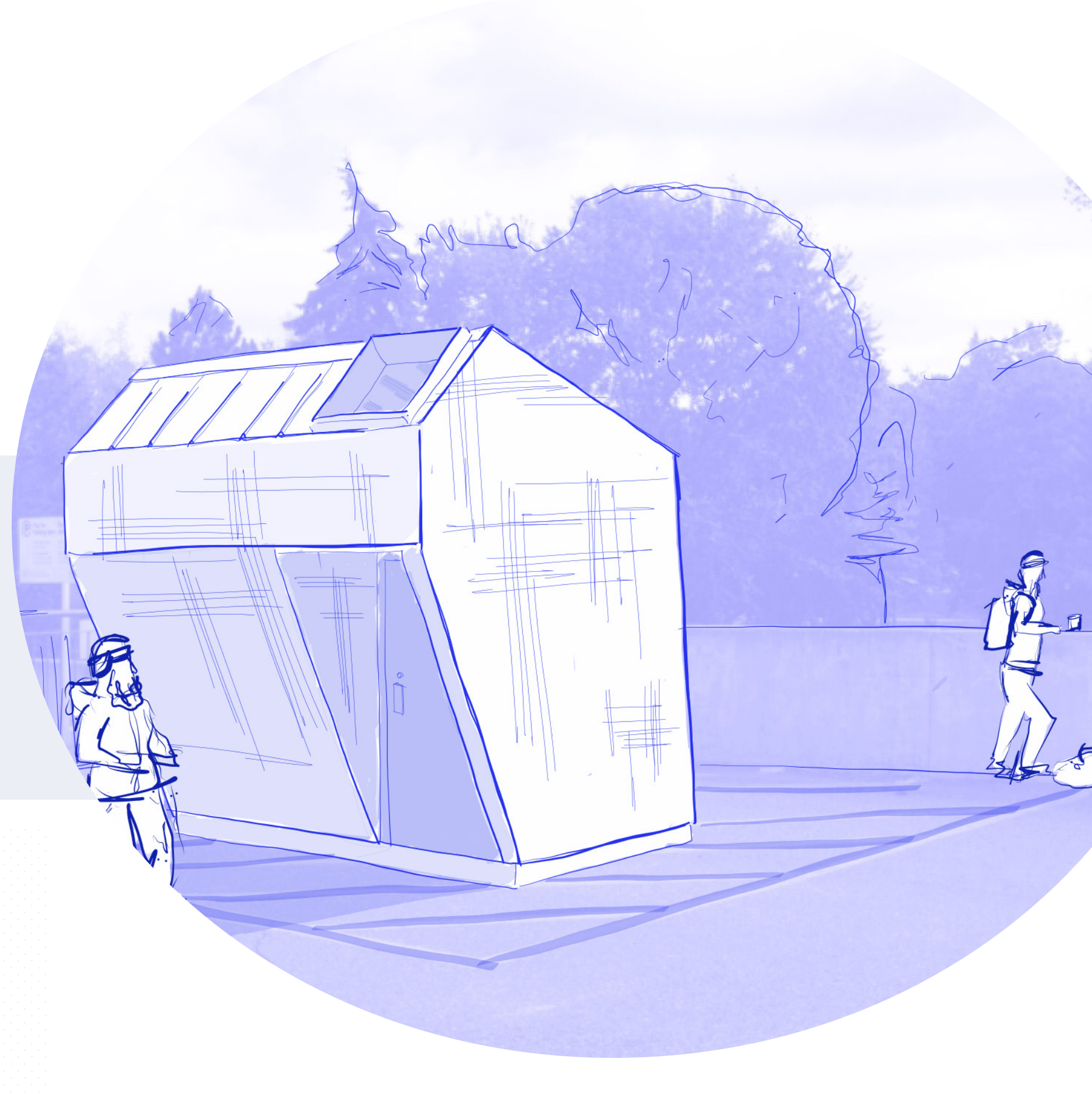
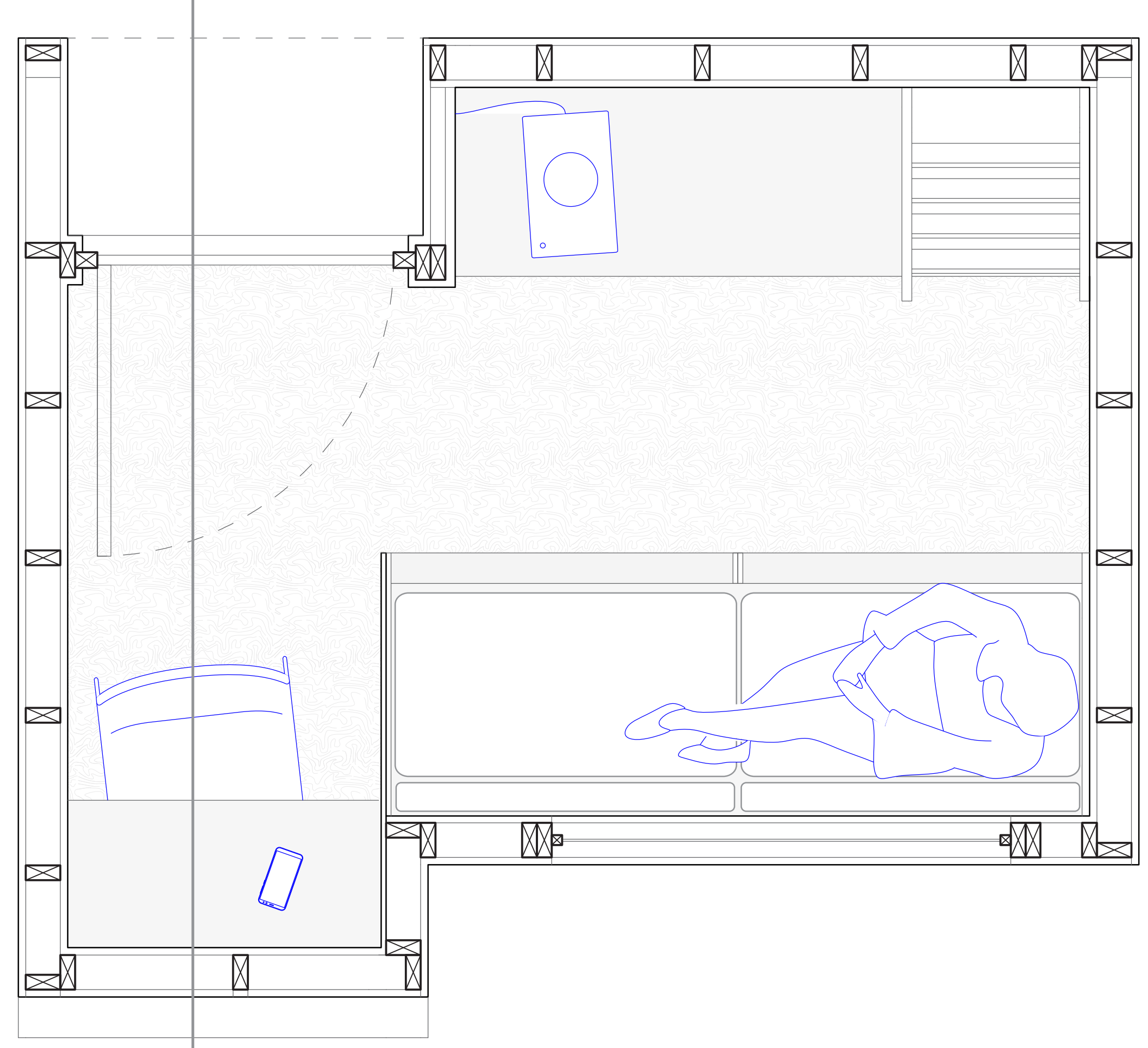


Liveables Parking Lot Leftovers

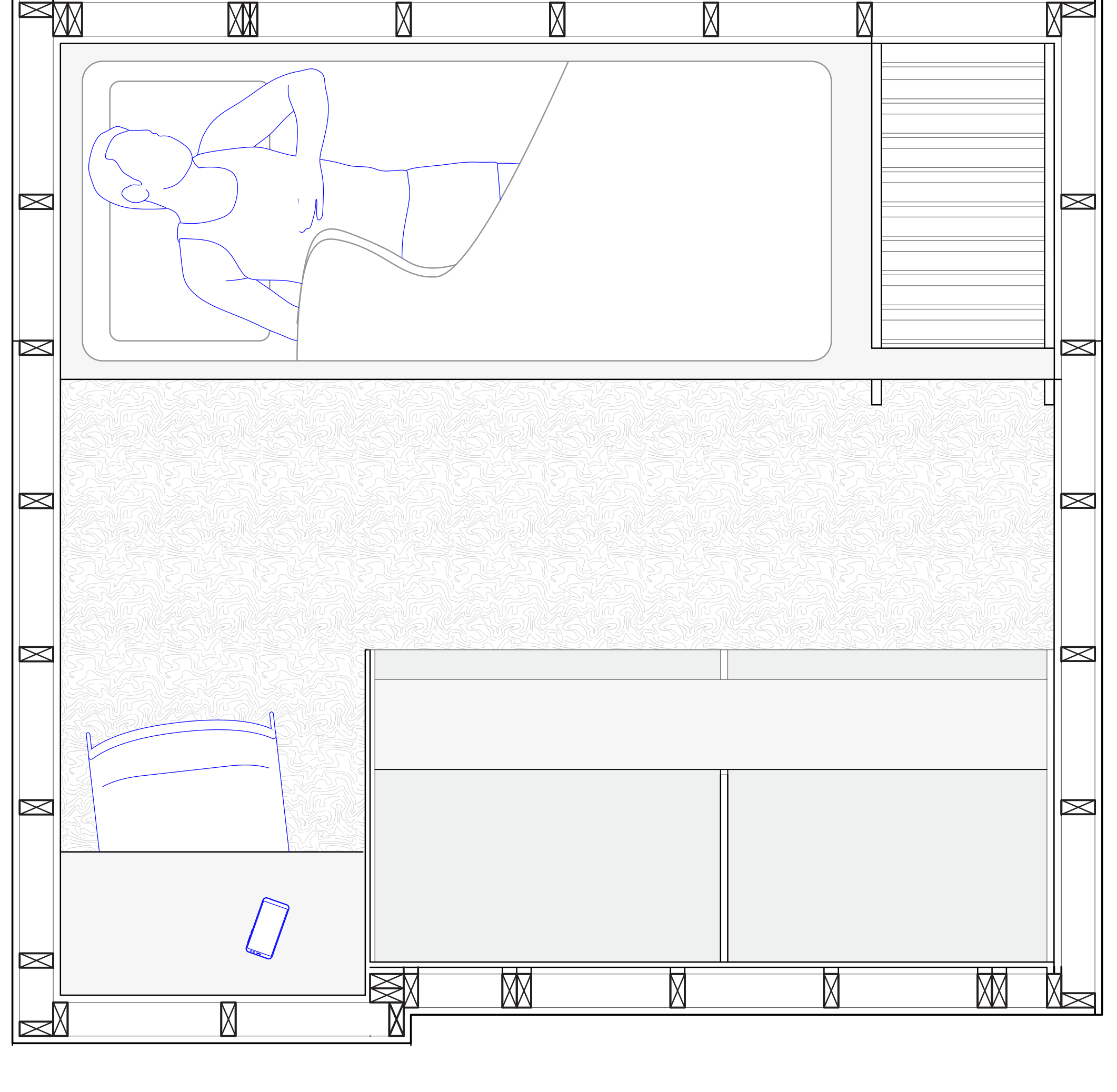


Parking Lot Liveables aims to return unused vehicle-centred spaces to the human being. These site opportunities are throughout the Downtown, and as the world shifts towards more green alternatives, these spaces will be found all over the world. Chronic homelessness requires longer-term transitional shelter. Our project aims to not only shelter the user, but also provide pride of place through identity, privacy, and and passive strategies to support the user through their transition. The Parking Lot Leftover we have analyzed is located in the heart of Downtown Sudbury, near the necessary support services required by the targeted user.

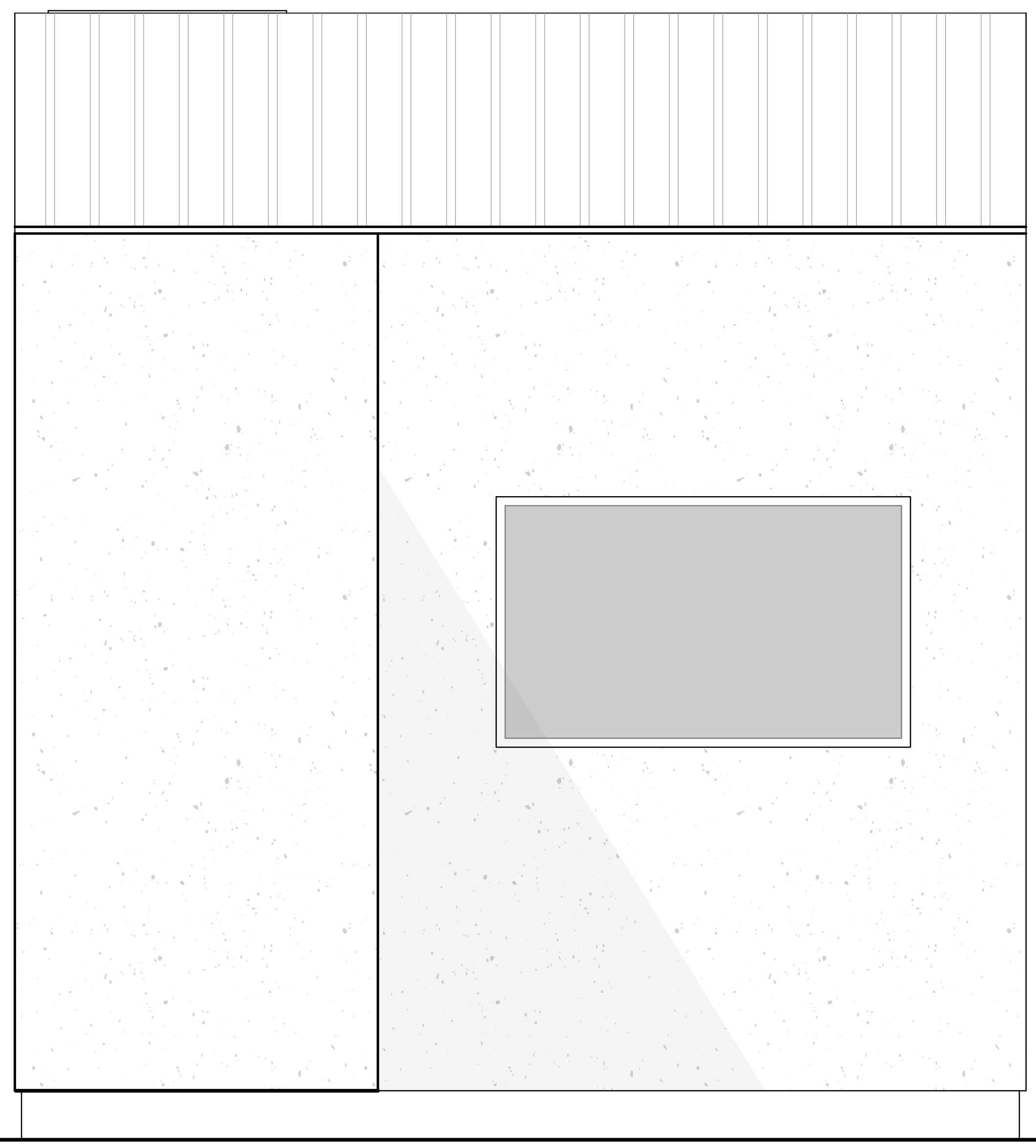
Kudhva
Overall Size/Scale
Unique Sculptural Form
Integrated Source of Heat
Lifted Above the Ground Plane
Separate Sleeping + Lounge Space



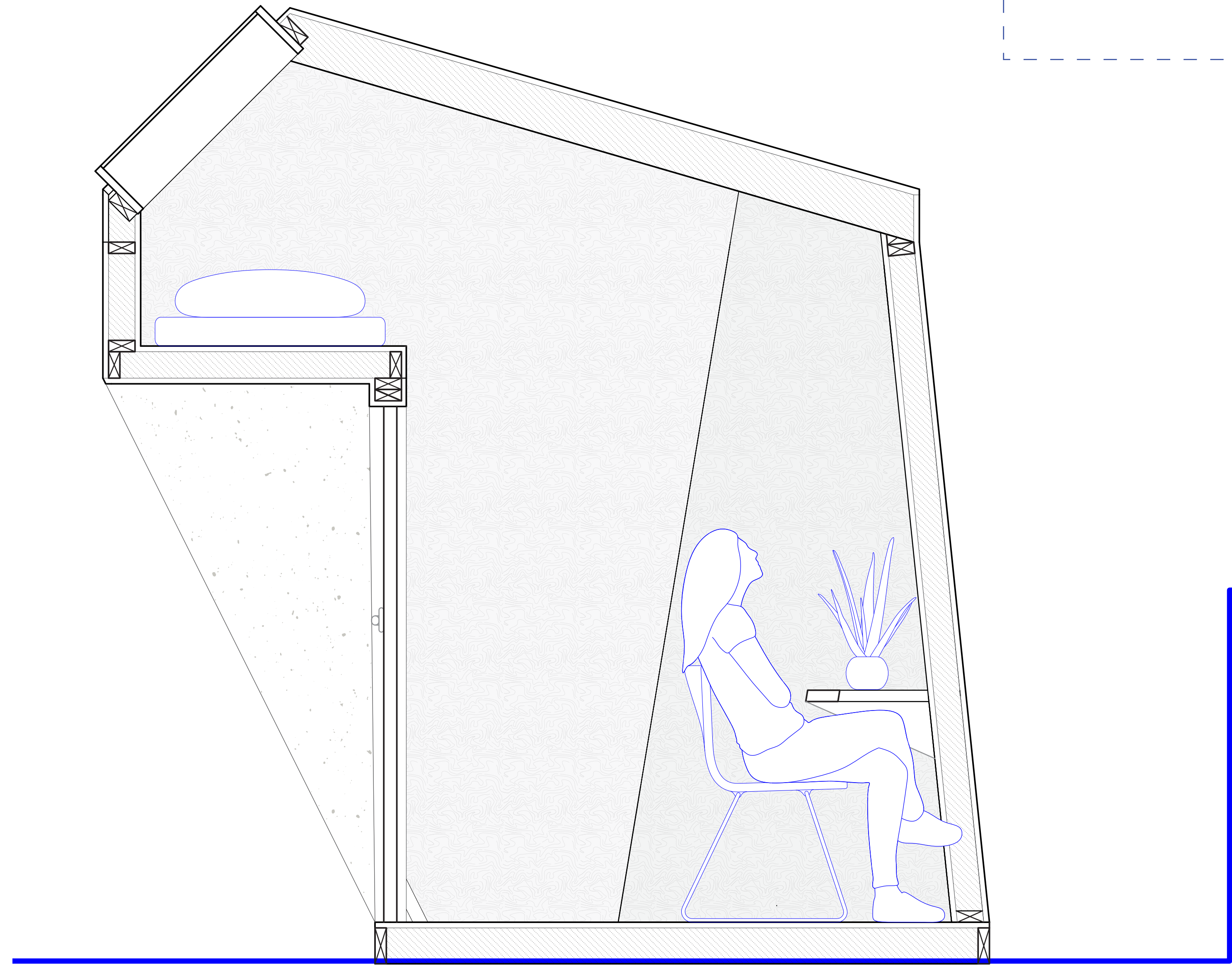
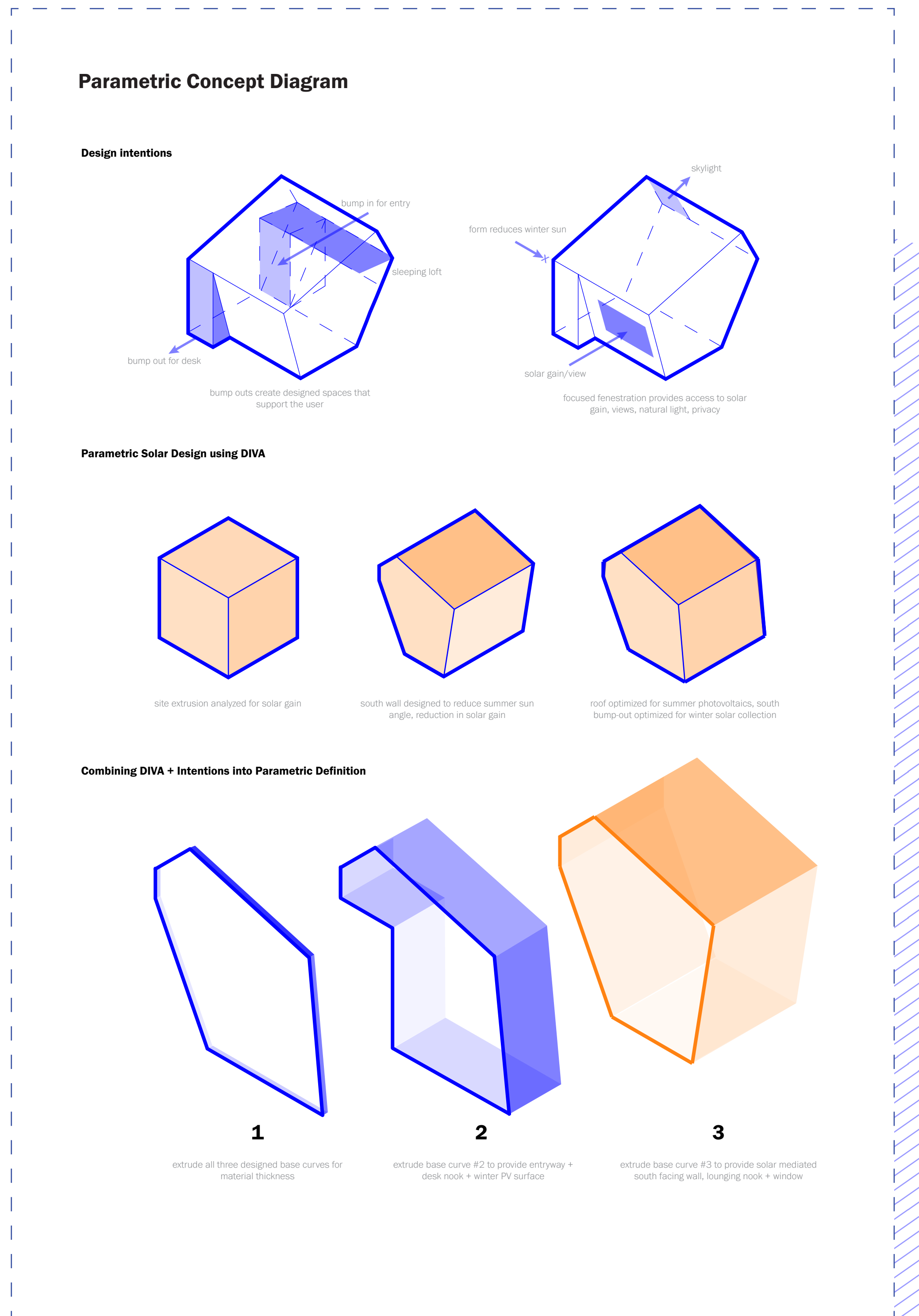
Floor Plan
1:10



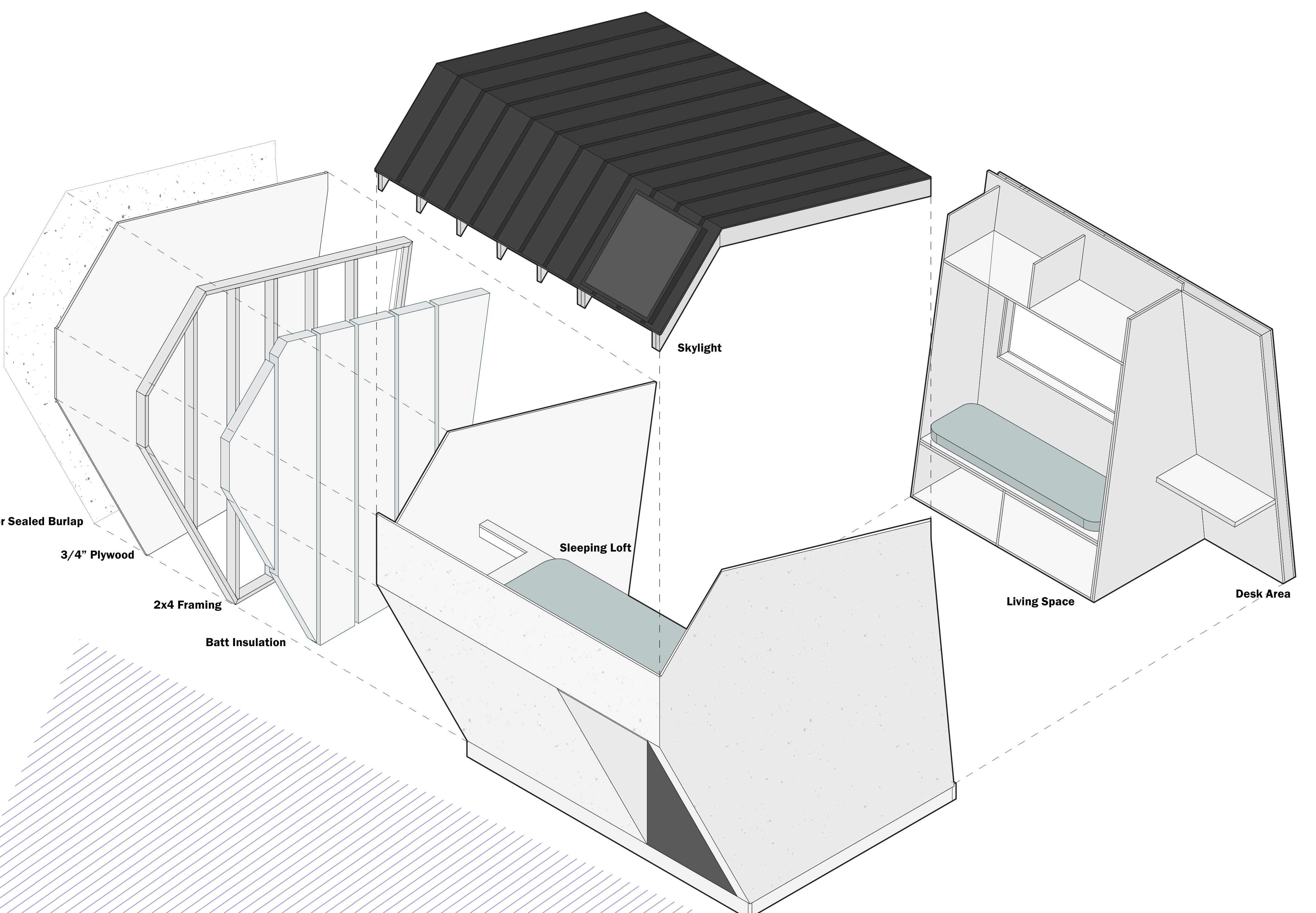
Loft Plan
1:10



South Elevation
1:10



Section A
1:10



Exploded Axo