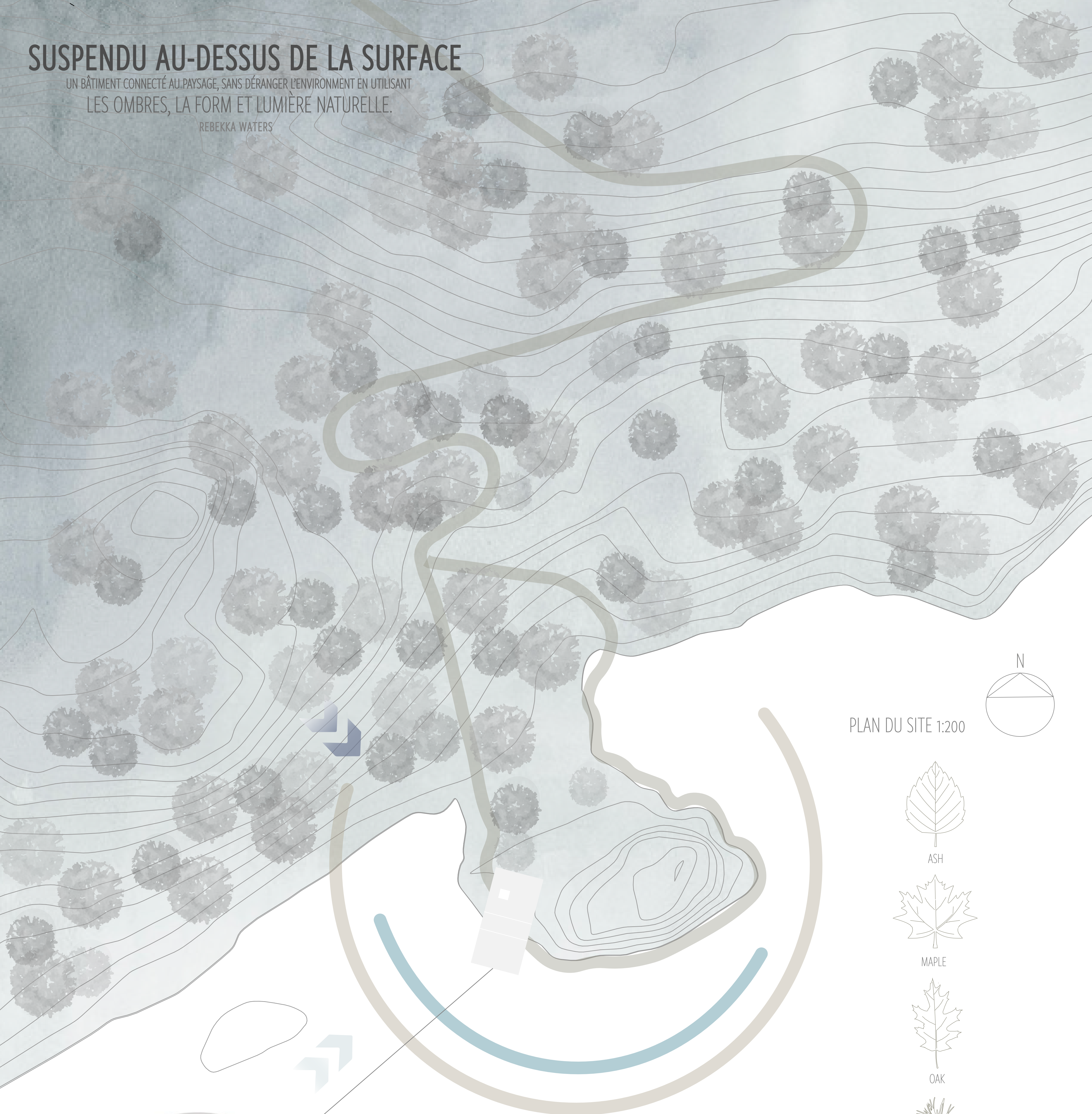


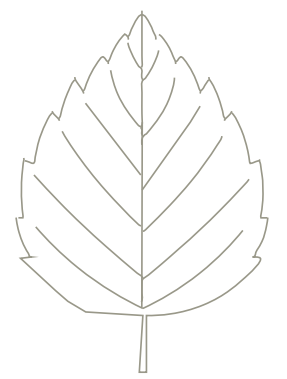
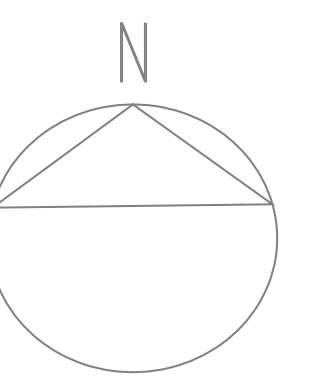
# SUSPENDU AU-DESSUS DE LA SURFACE

UN BÂTIMENT CONNECTÉ AU PAYSAGE, SANS DÉRANGER L'ENVIRONNEMENT EN UTILISANT  
LES OMBRES, LA FORM ET LUMIÈRE NATURELLE.

REBEKKA WATERS



PLAN DU SITE 1:200



ASH



MAPLE



OAK

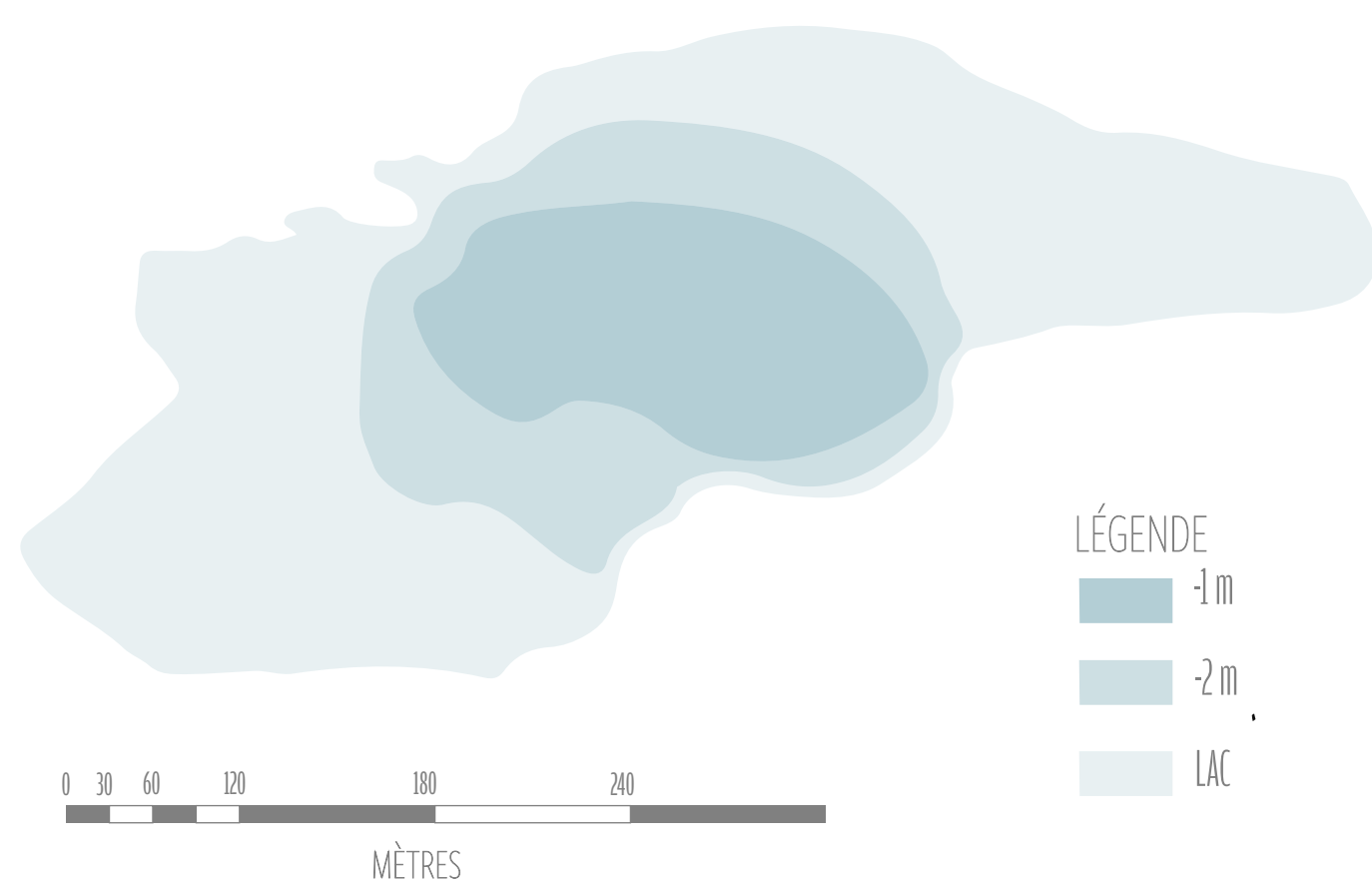


SPRUCE

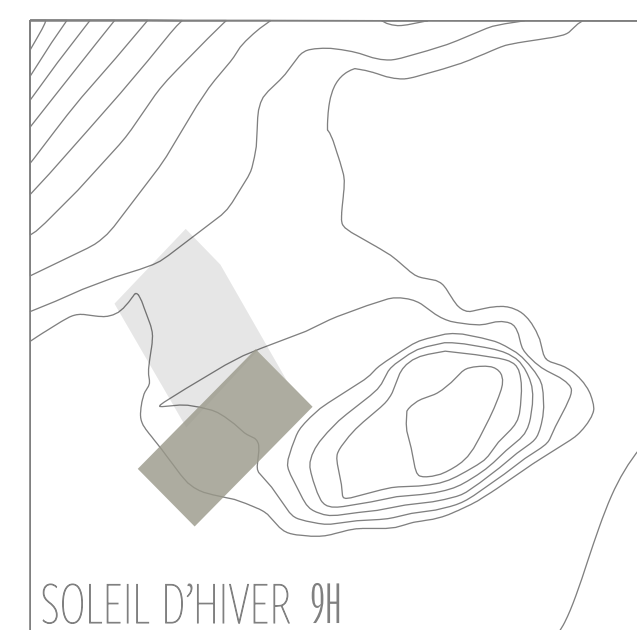


VUE DU SAUNA

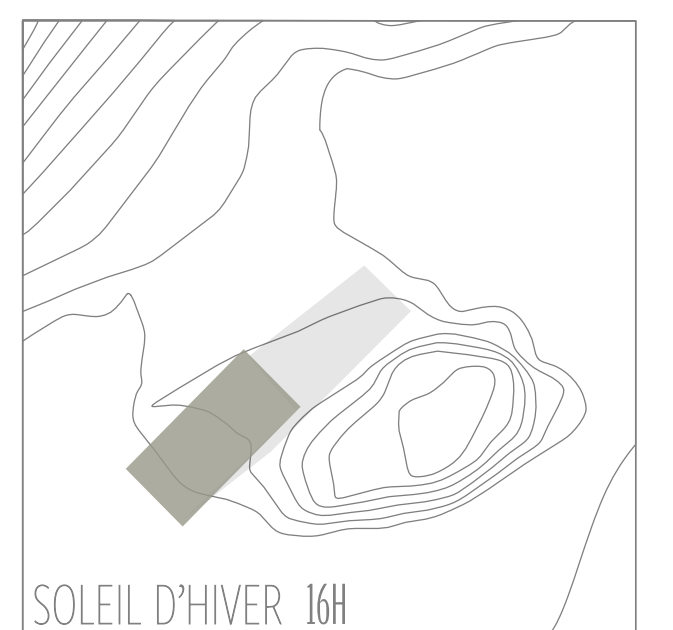
CONTOURS DU LAC BENNETT



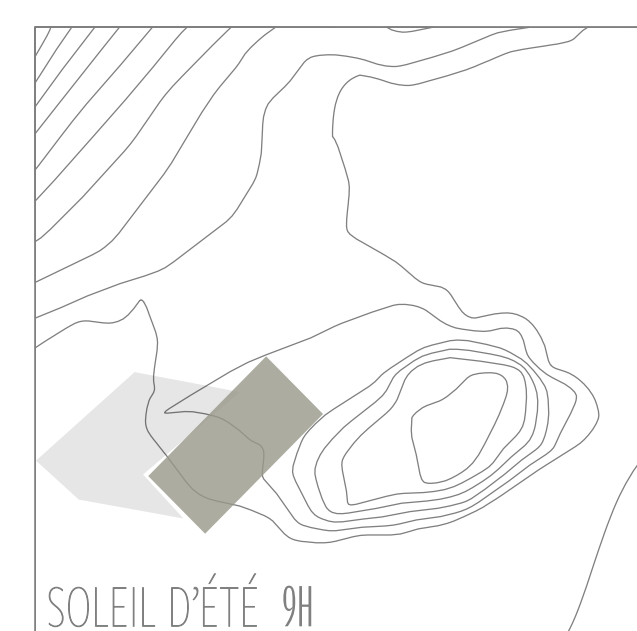
REPRÉSENTATION DES L'OMBRES DU SITE



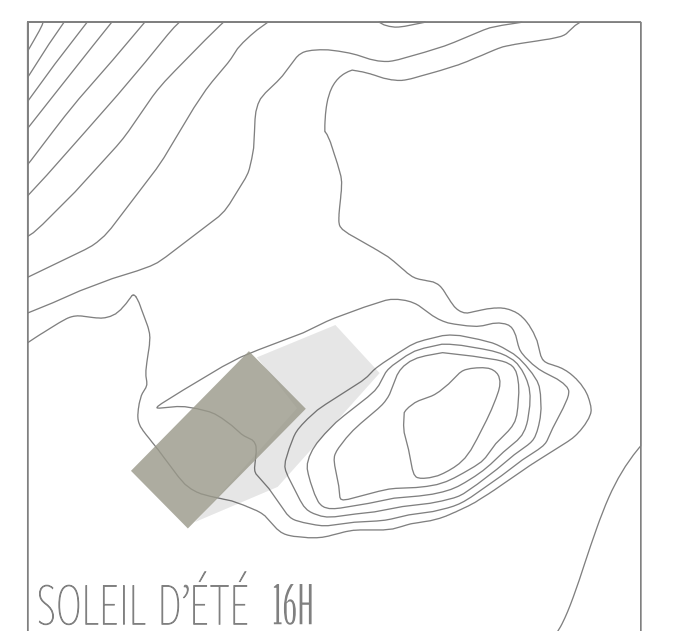
SOLEIL D'HIVER 9H



SOLEIL D'HIVER 16H



SOLEIL D'ÉTÉ 9H



SOLEIL D'ÉTÉ 16H

## LÉGENDE

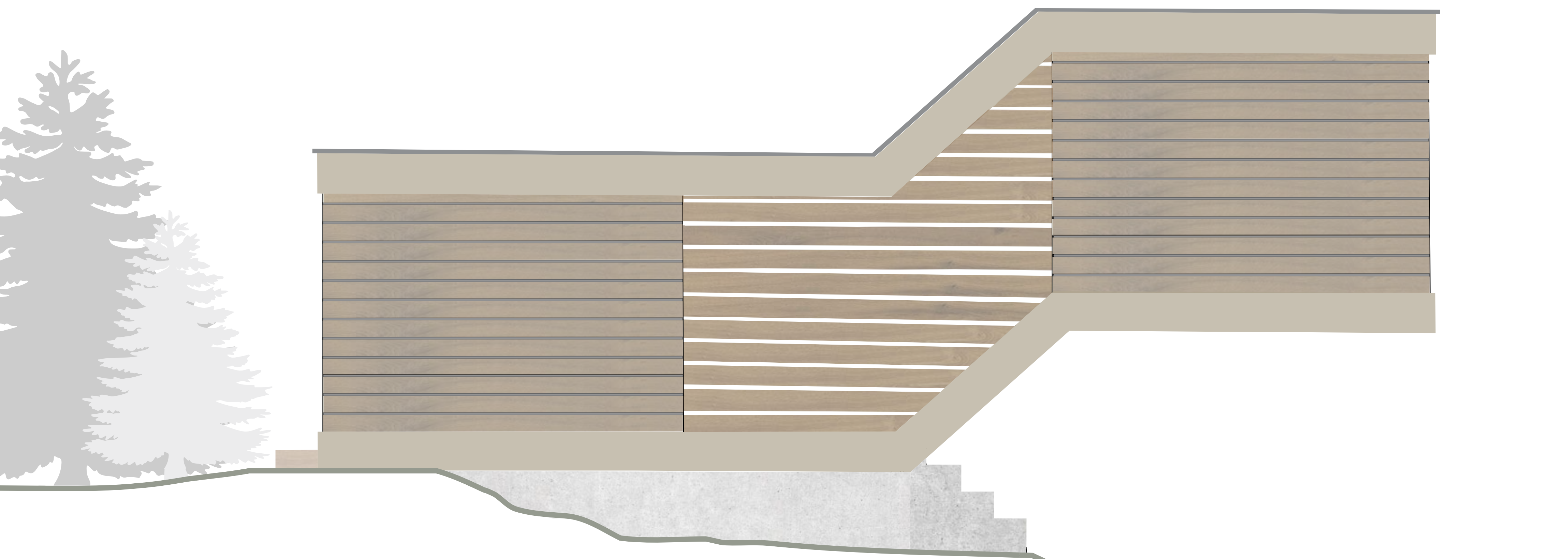
- CHEMIN DE SOLIEL SOLTICE D'HIVER
- CHEMIN DE SOLIEL SOLTICE D'ÉTÉ
- VENTS DOMINANTS D'HIVER
- VENTS DOMINANTS D'ÉTÉ

## LÉGENDE

- -1 m
- -2 m
- LAC



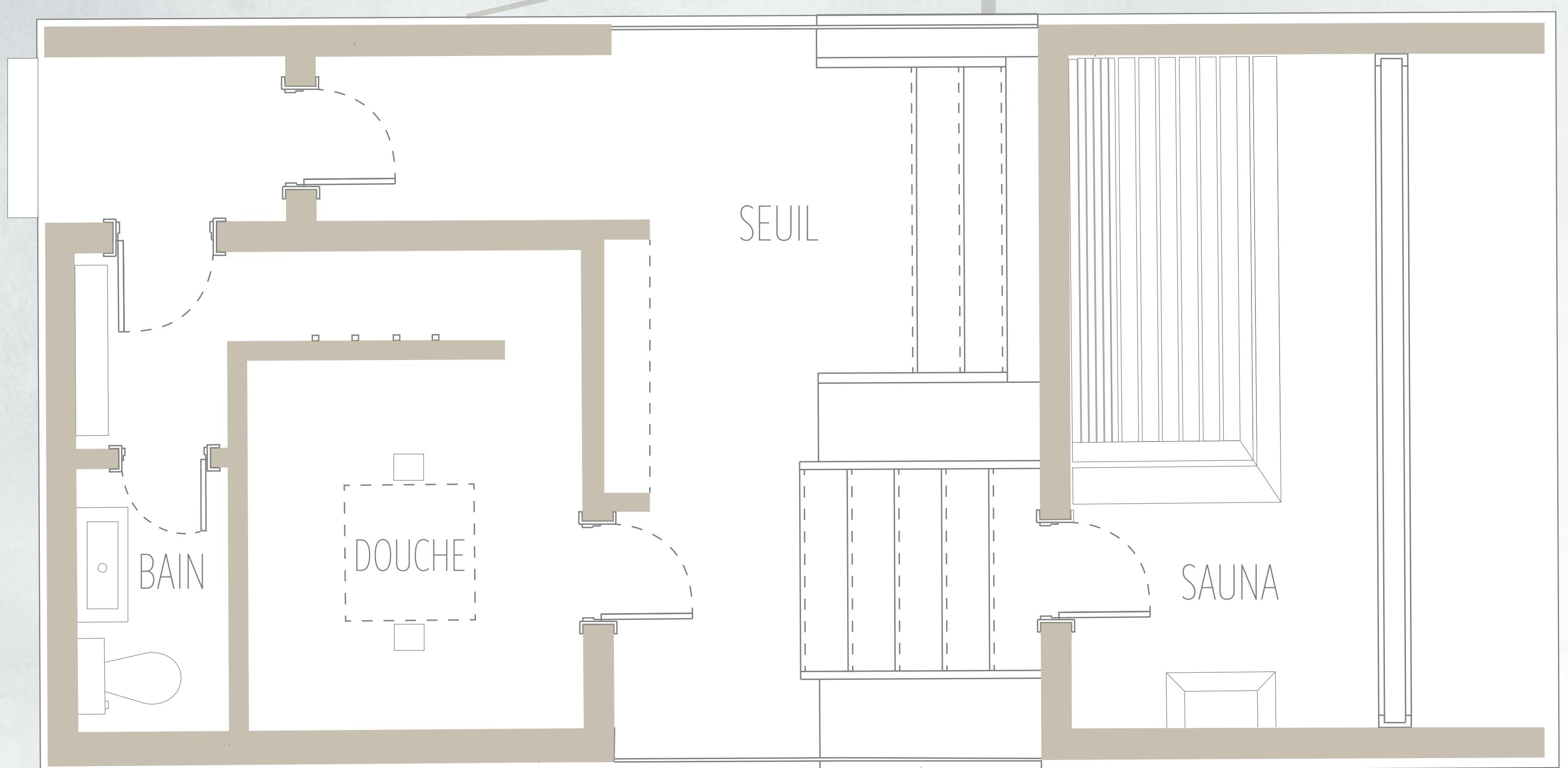




ÉLÉVATION ÉCHELLE 1:25



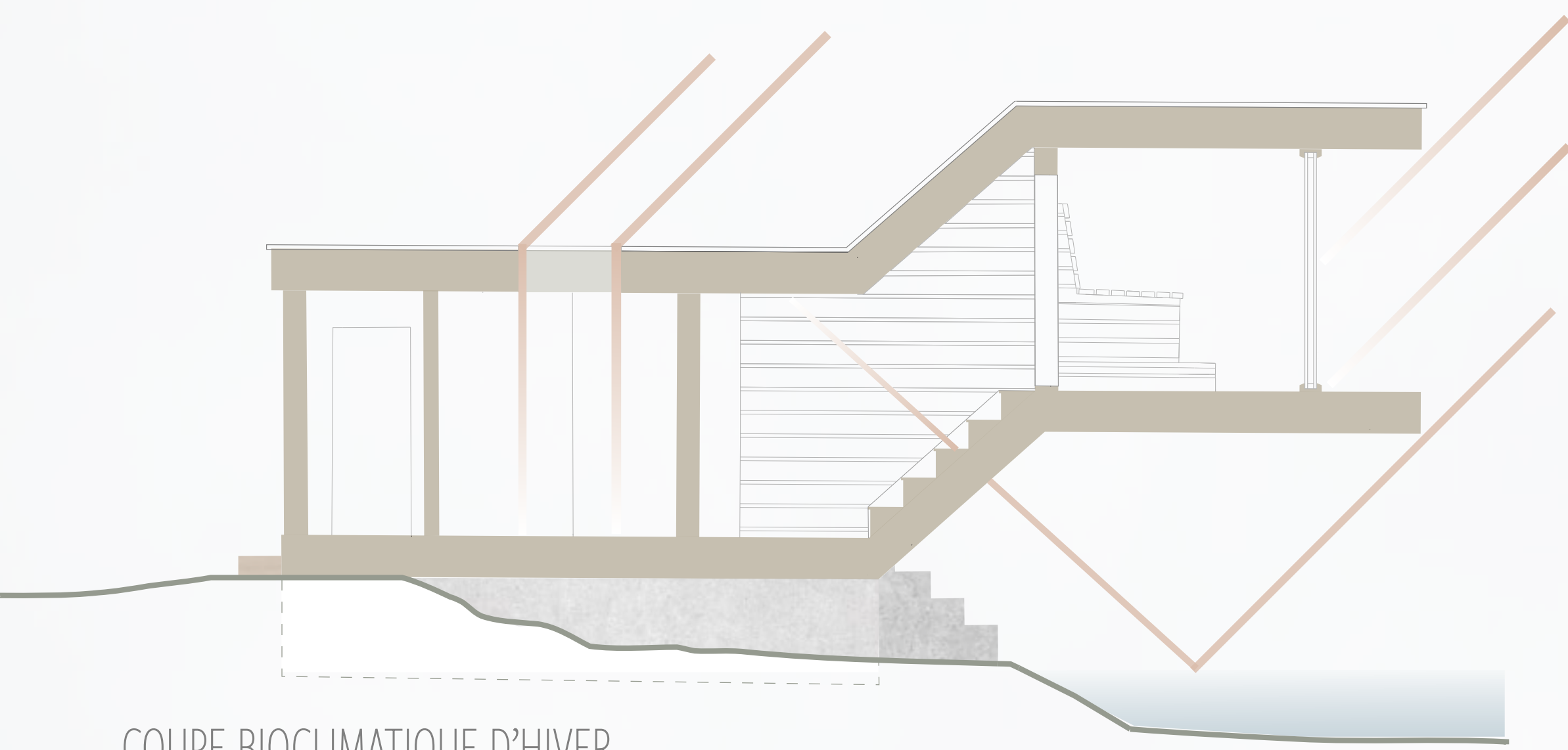
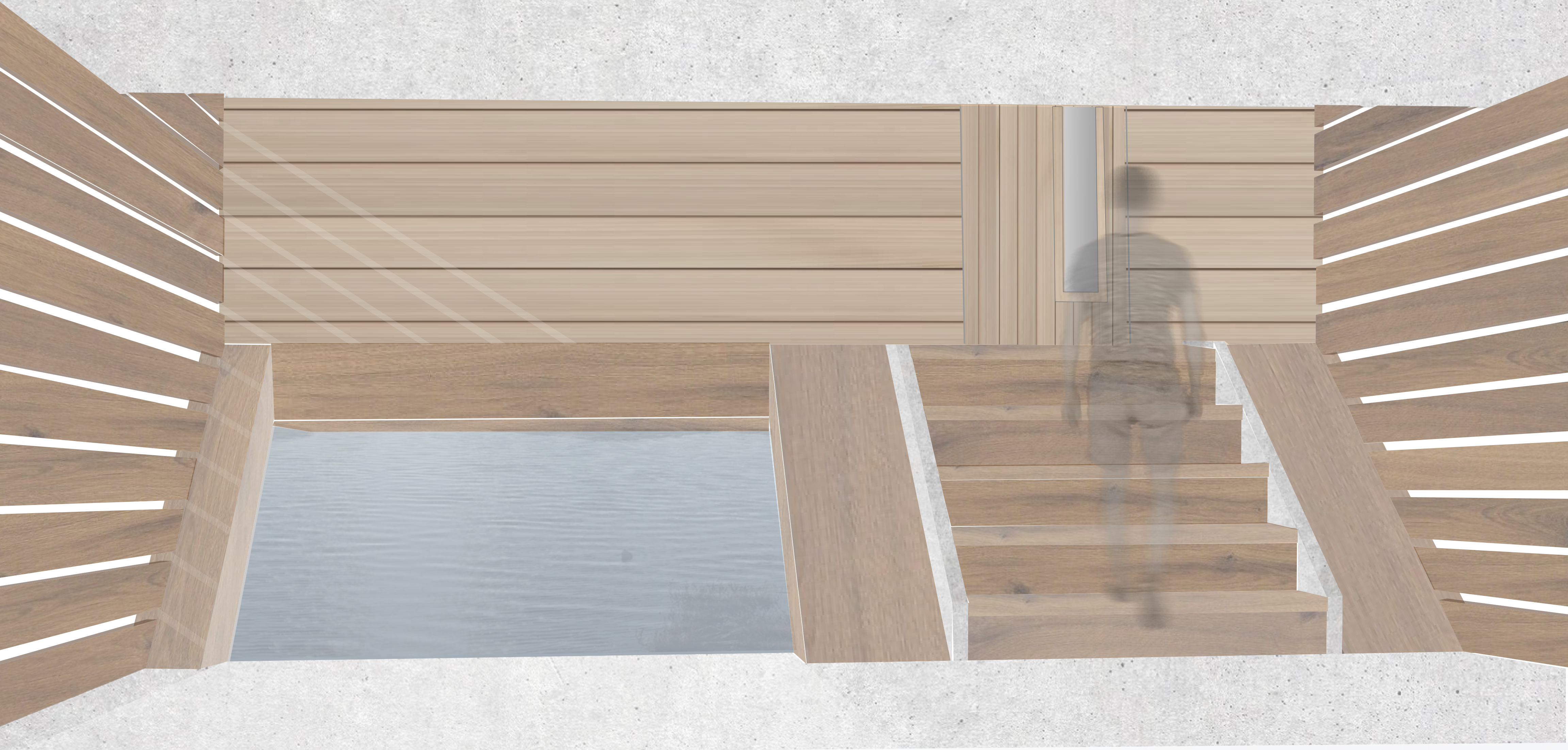
COUPE ÉCHELLE 1:25



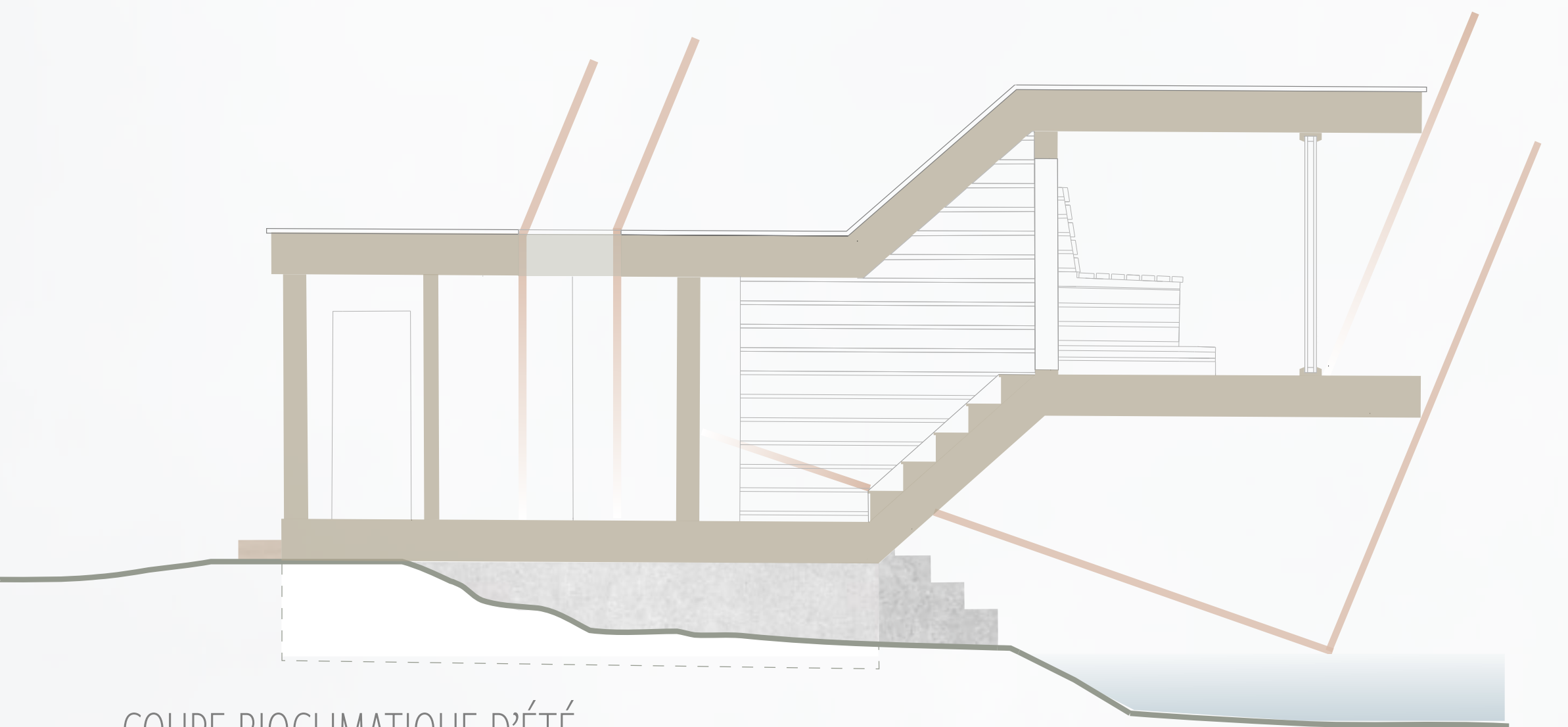
PLAN ÉCHELLE 1:25



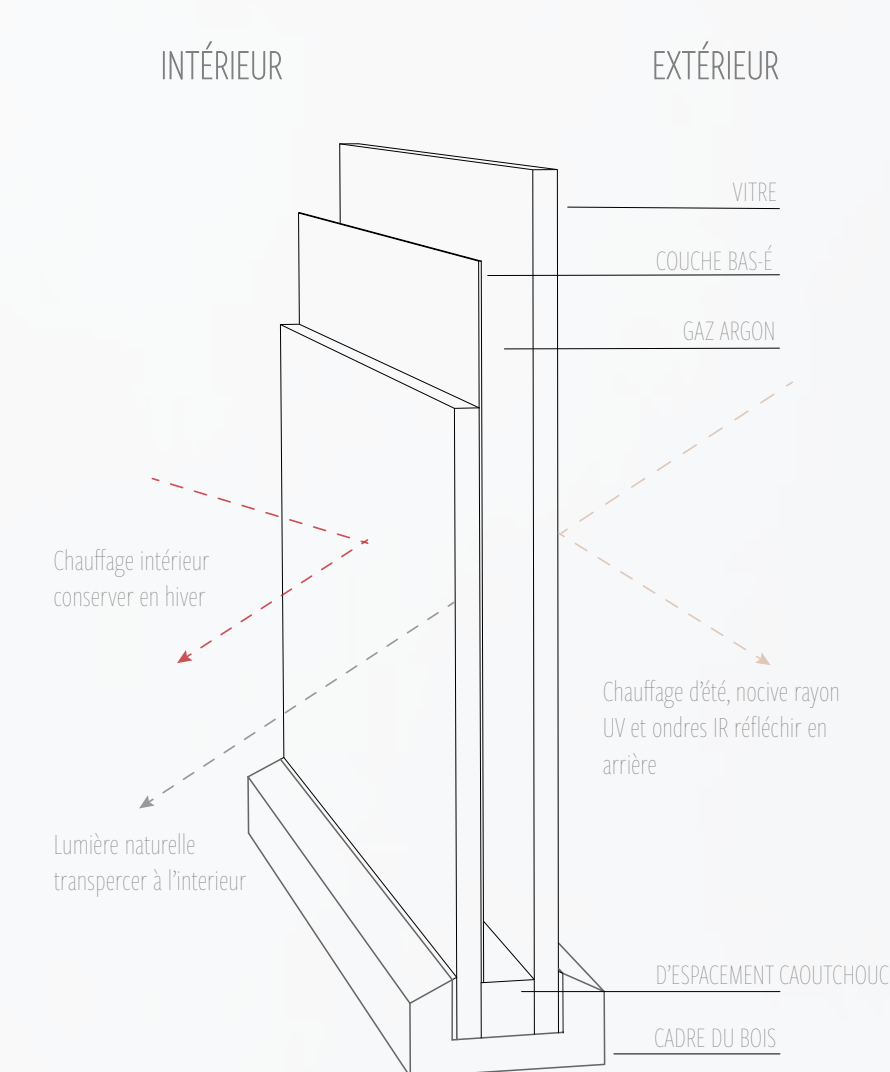




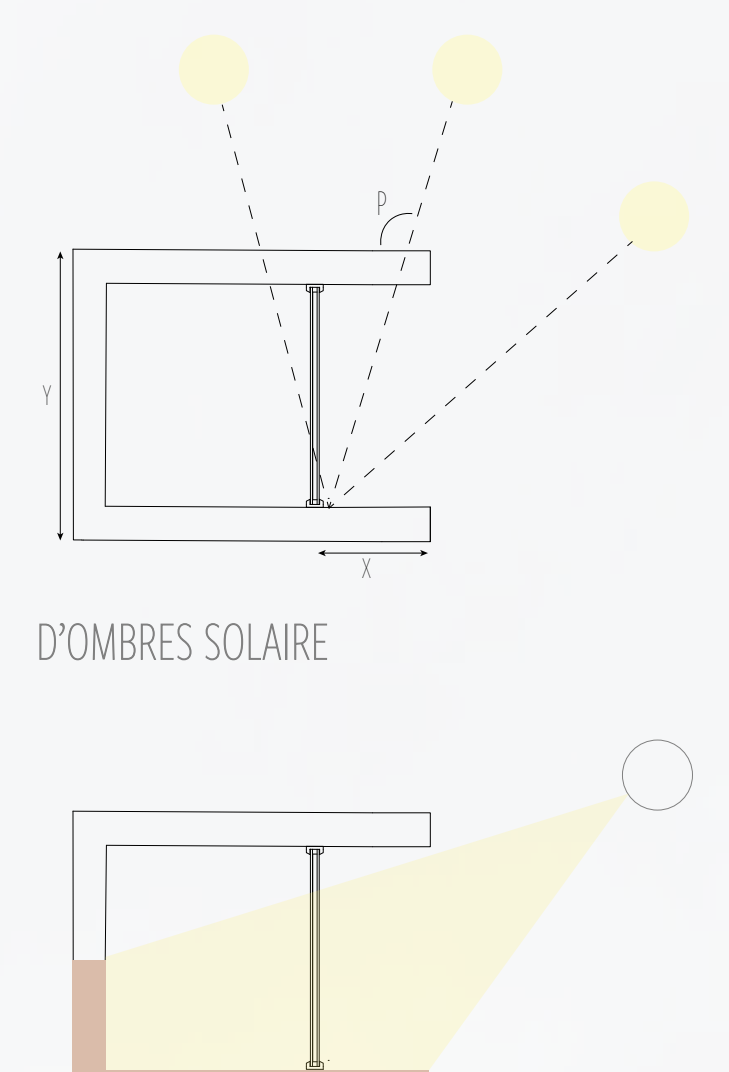
COUPE BIOCLIMATIQUE D'HIVER



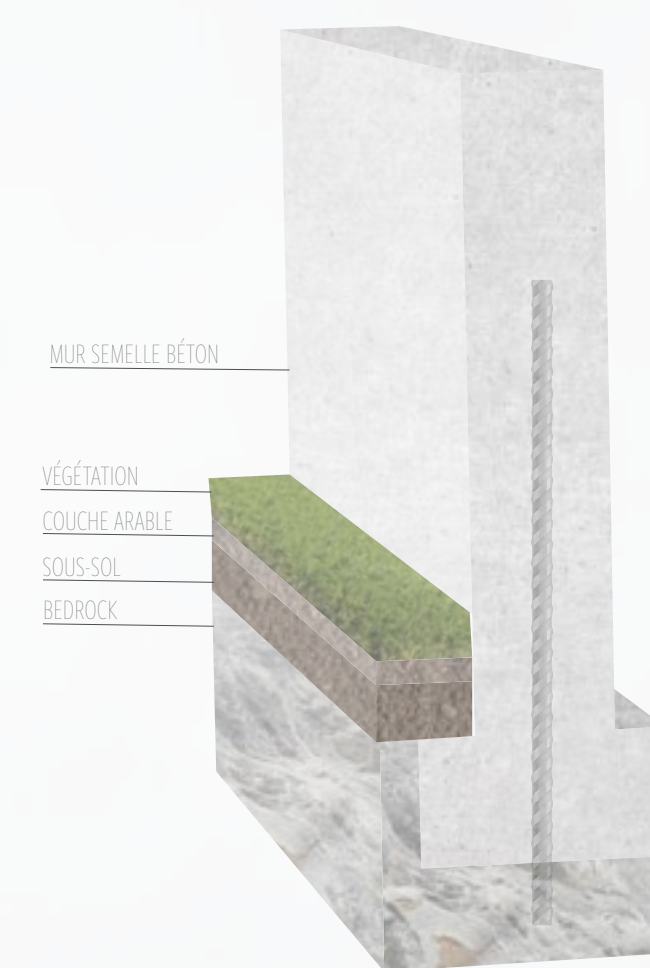
COUPE BIOCLIMATIQUE D'ÉTÉ



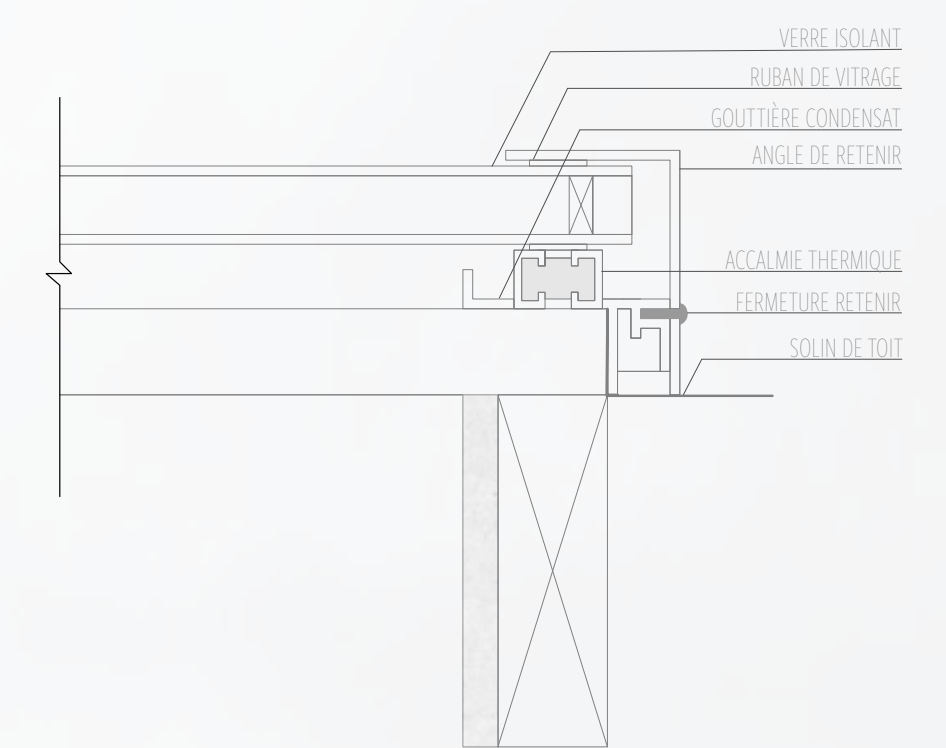
VITRAGE BAS-ÉMISSIVITÉ DOUBLE



CHAUFFAGE SOLAIRE/ ÉCLAIRAGE NATUREL



DÉTAIL DU FONDATION 1:10



DÉTAIL DU FENÊTRE DE TOIT 1:5

